

EPA 539 on Kinetex 2.6µm Evo C18 100x2.1mm

Column: Kinetex® 2.6µm EVO C18 100 Å, LC Column 100 x 2.1 mm, Ea

Dimensions: 100 x 2.1 mm ID

Order No: 00D-4725-AN

Elution Type: Gradient

Eluent A: 0.2% Ammonium Hydroxide in Water

Eluent B: 0.2% Ammonium Hydroxide in MeOH

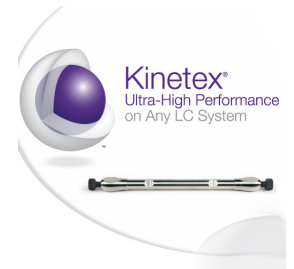
Gradient Profile:	Step No.	Time (min)	Pct A	Pct B
	1	0	70	30
	2	1	35	65
	3	6	35	65
	4	6.5	15	85
	5	10.5	15	85
	6	11	70	30
	7	13.5	70	30

Flow Rate: 200 µL/min

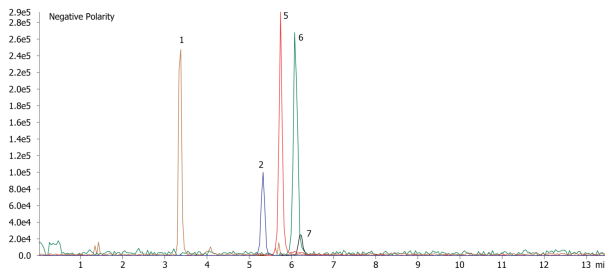
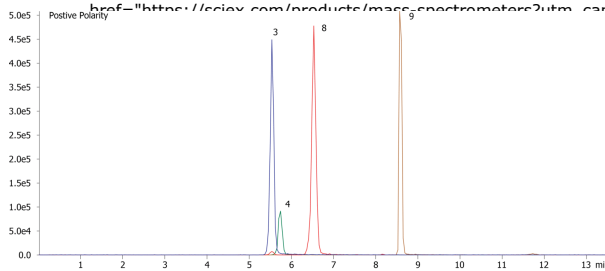
Col. Temp.: 1 °C

Detection: Mass Spectrometer (MS) @ amu (ambient)

Detector Info: SCIEX



Products used in this application:




ANALYTES:

- 1 Estriol (Neg Pol)**
Retention Time: 3.35 min
- 2 Equilin (Neg Pol)**
Retention Time: 5.31 min
- 3 4-Androstene-3,17-dione (Pos Pol)**
Retention Time: 5.55 min
- 4 Estrone (Neg Pol)**
Retention Time: 5.73 min
- 5 Norethisterone (Neg Pol)**
Retention Time: 5.74 min
- 6 17-b-Estradiol (Neg Pol)**
Retention Time: 6.07 min
- 7 17-a-Ethynylestradiol (Neg Pol)**
Retention Time: 6.2 min
- 8 Testosterone (Pos Pol)**
Retention Time: 6.54 min

©2024 Phenomenex Inc. All rights reserved.
Retention Time: 6.54 min

For more information contact your Phenomenex Representative at support@phenomenex.com

 Phenomenex products are available worldwide.

www.phenomenex.com

support@phenomenex.com