

Polymer additives on Kinetex 2.6u Biphenyl 50X3.0 mm

Column: Kinetex® 2.6 µm Biphenyl 100 Å, LC Column 50 x 3.0 mm, Ea

Dimensions: 50 x 3 mm ID

Order No: 00B-4622-Y0

Elution Type: Gradient

Eluent A: DI water

Eluent B: MeOH

Gradient Profile:	Step No.	Time (min)	Pct A	Pct B
	1	0.01	60	40
	2	5	10	90
	3	7	10	90
	4	7.01	60	40
	6	8.5	60	40

Flow Rate: 0.4 mL/min

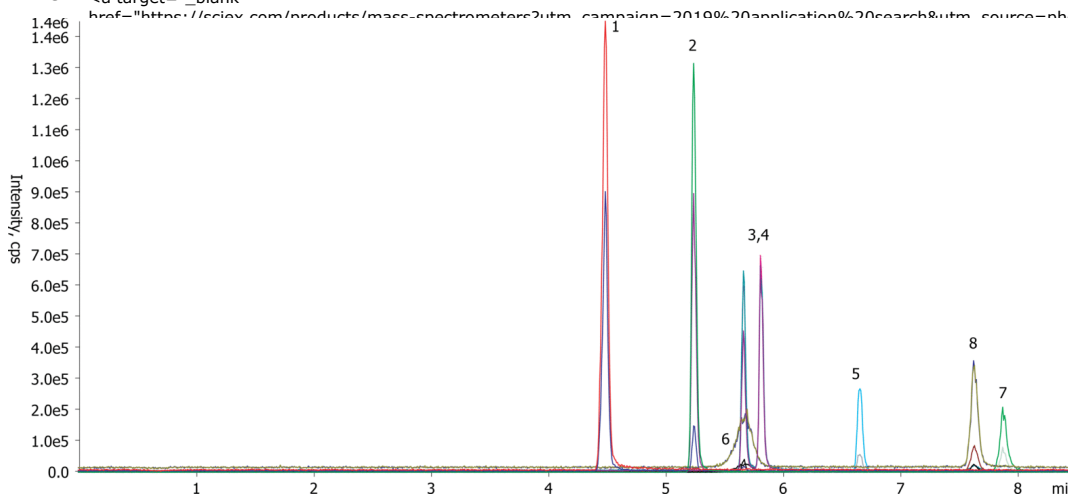
Col. Temp.: ambient

Detection: Tandem Mass Spec (MS-MS) @ (ambient)

Detector Info: SCIEX



Products used in this application:



ANALYTES:

- 1** Diethyl phthalate
Retention Time: 4.5 min
- 2** Dipropyl phthalate
Retention Time: 5.3 min
- 3** Diisobutyl phthalate
Retention Time: 5.7 min
- 4** Dibutyl phthalate
Retention Time: 5.8 min
- 5** Dicyclohexyl phthalate
Retention Time: 6.7 min
- 6** Di-n-octyl phthalate
Retention Time: 5.7 min
- 7** Chimassorb-81
Retention Time: 7.9 min
- 8** Bis(2-ethylhexyl) phthalate
Retention Time: 7.6 min

