

# HPLC Application

ID No.: 23041

## Amyloid B on Kinetex 2.6u EVO C18 100X3.0 mm

**Column:** Kinetex® 2.6µm EVO C18 100 Å, LC Column 100 x 3.0 mm, Ea

**Dimensions:** 100 x 3 mm ID

**Order No:** 00D-4725-Y0

**Elution Type:** Gradient

**Eluent A:** 0.3% NH4OH in water

**Eluent B:** 90:10 Acetonitrile: 0.3%NH4OH in water

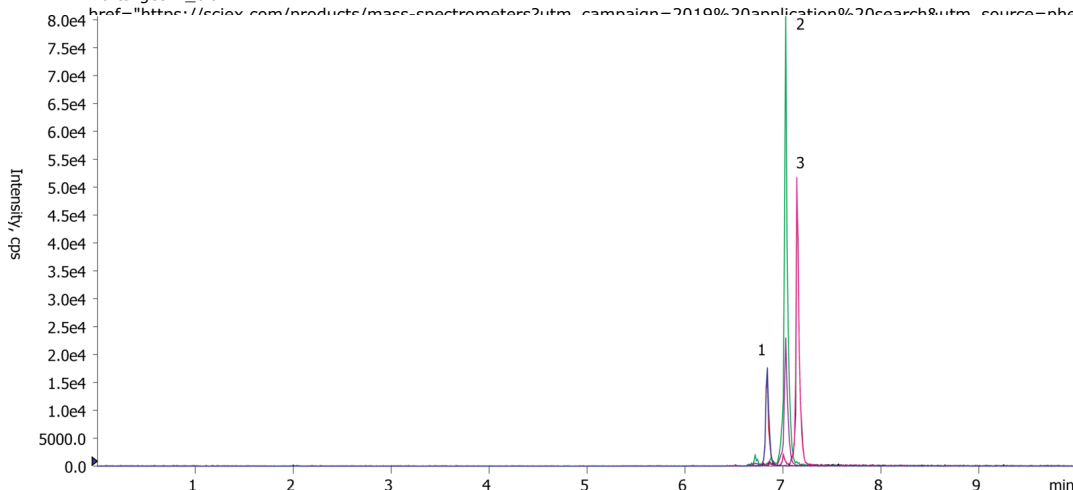
| Gradient Profile: | Step No. | Time (min) | Pct A | Pct B |
|-------------------|----------|------------|-------|-------|
|                   | 1        | 0          | 95    | 5     |
|                   | 2        | 1          | 95    | 5     |
|                   | 3        | 6.5        | 55    | 45    |
|                   | 4        | 7.5        | 55    | 45    |
|                   | 6        | 8          | 95    | 5     |
|                   | 7        | 11         | 95    | 5     |

**Flow Rate:** 0.3 mL/min

**Col. Temp.:** ambient

**Detection:** Tandem Mass Spec (MS-MS) @ (ambient)

**Detector Info:** <a target="\_blank" href="https://sciex.com/products/mass-spectrometers?utm\_campaign=2019%20application%20search&utm\_source=phenomenex&utm\_medium=referral">SCIEX</a>



Products used in this application:



### ANALYTES:

- 1** Amyloid B-38  
Retention Time: 6.8 min
- 2** Amyloid B-40  
Retention Time: 7 min
- 3** Amyloid B-42  
Retention Time: 7.2 min

