

# HPLC Application

ID No.: 23042

## Carcinogenic amines on Kinetex 2.6 µm EVO C18

**Column:** Kinetex<sup>®</sup> 2.6µm EVO C18 100 Å, LC Column 150 x 2.1 mm, Ea

**Dimensions:** 150 x 2.1 mm ID

**Order No:** 00F-4725-AN

**Elution Type:** Gradient

**Eluent A:** 10 mM ammonium acetate/ ACN (95:5)

**Eluent B:** Acetonitrile

Gradient Profile:	Step No.	Time (min)	Pct A	Pct B
	1	0	95	5
	2	10	5	95

**Flow Rate:** 0.4 mL/min

**Col. Temp.:** 50 °C

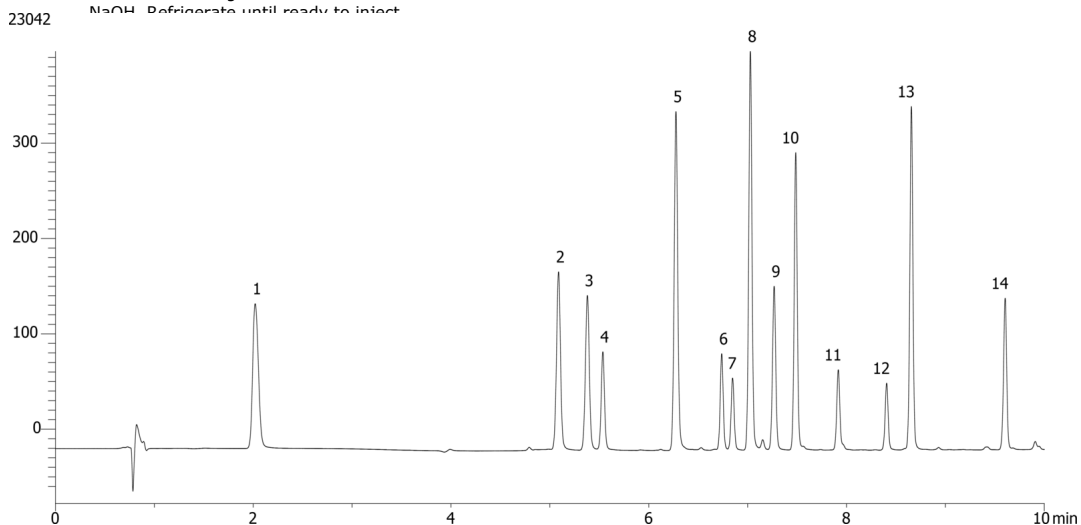
**Detection:** UV-Vis Abs.-Variable Wave.(UV) @ 240 nm (ambient)

**Analyst Note:** Forced degradation protocol:

Reconstitute 1 mg of cefaclor neat standard with 1.0 mL of 1 M HCl. Heat the solution at 60 °C for 6 hours then neutralize with 1.0 mL of 1 M NaOH. Refrigerate until ready to inject.



Products used in this application:



## Carcinogenic amines on Kinetex 2.6 $\mu$ m EVO C18

### ANALYTES:

- 1** 4-Methyl-m-phenylenediamine
- 2** o-Anisidine
- 3** o-Toluidine
- 4** Benzidine
- 5** 4-Chloroaniline
- 6** 3,3'-Dimethoxybenzidine
- 7** 3,3'-Dimethylbenzidine
- 8** 2-Naphthylamine
- 9** 2,4,5-Trimethylaniline
- 10** 4,4'-methylenedio-toluidine
- 11** 4-Aminobiphenyl
- 12** 3,3'-Dichlorobenzidine
- 13** 2,2'-Dichloro-4,4'-methylenedianiline
- 14** o-Aminoazotoluene

