

# HPLC Application

ID No.: 23082

## Fluvoxamine analysis at high pH using Kinetex 1.7u EVO C18 50x2.1mm

**Column:** Kinetex<sup>®</sup> 1.7 $\mu$ m EVO C18 100 Å, LC Column 50 x 2.1 mm, Ea

**Dimensions:** 50 x 2.1 mm ID

**Order No:** 00B-4726-AN

**Elution Type:** Gradient

**Eluent A:** 20mM Potassium phosphate pH 10

**Eluent B:** Methanol

Gradient Profile:	Step No.	Time (min)	Pct A	Pct B
	1	0	95	5
	2	8	10	90

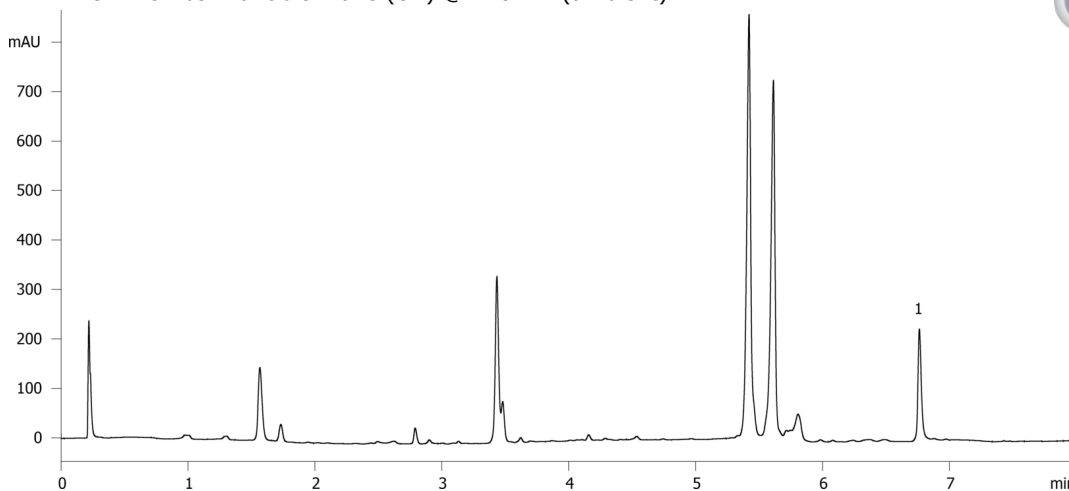
**Flow Rate:** 0.5 mL/min

**Col. Temp.:** 30 °C

**Detection:** UV-Vis Abs.-Variable Wave.(UV) @ 210 nm (ambient)



Products used in this application:



### ANALYTES:

1 Fluvoxamine

Retention Time: 6.763 min

