

# HPLC Application

ID No.: 23092

## Amino Acid Analysis using OPA on Kinetex 5u EVO C18 150x4.6mm

**Column:** Kinetex<sup>®</sup> 5 $\mu$ m EVO C18 100 Å, LC Column 150 x 4.6 mm, Ea

**Dimensions:** 150 x 4.6 mm ID

**Order No:** 00F-4633-E0

**Elution Type:** Gradient

**Eluent A:** 20mM Potassium Phosphate pH 7.2

**Eluent B:** 50:50 Acetonitrile:Methanol

Gradient Profile:	Step No.	Time (min)	Pct A	Pct B
	1	0	97	3
	2	20	40	60
	3	23	97	3

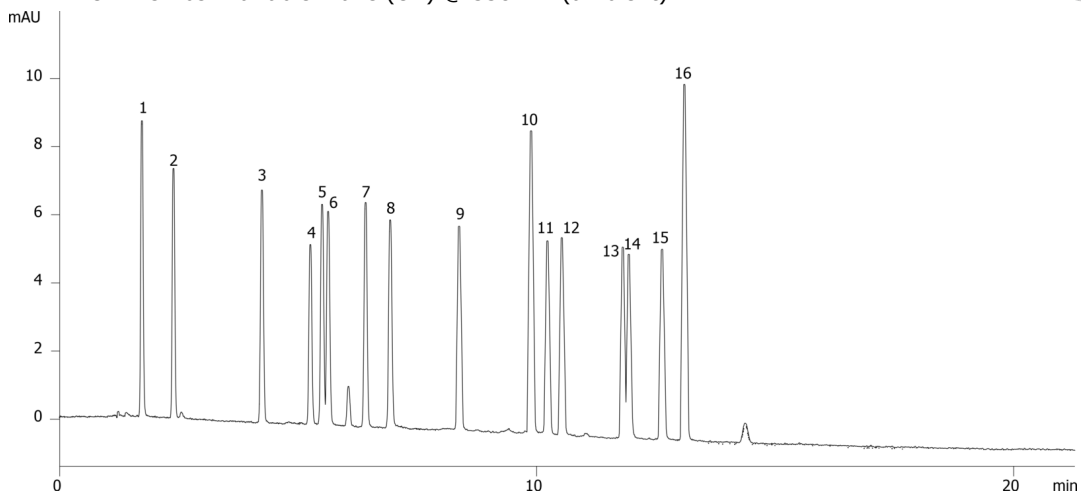
**Flow Rate:** 1 mL/min

**Col. Temp.:** 30 °C

**Detection:** UV-Vis Abs.-Variable Wave.(UV) @ 338 nm (ambient)



Products used in this application:



## Amino Acid Analysis using OPA on Kinetex 5u EVO C18 150x4.6mm

### ANALYTES:

- 1 ASP
- 2 GLU
- 3 SER
- 4 HIS
- 5 THR
- 6 GLY
- 7 ARG
- 8 ALA
- 9 TYR
- 10 MET
- 11 VAL
- 12 CYS
- 13 PHE
- 14 ILE
- 15 LEU
- 16 LYS

