

# HPLC Application

ID No.: 23094

## Explosives Mix on Kinetex 5u EVO C18 150x4.6mm

**Column:** Kinetex<sup>®</sup> 5 $\mu$ m EVO C18 100 Å, LC Column 150 x 4.6 mm, Ea

**Dimensions:** 150 x 4.6 mm ID

**Order No:** 00F-4633-E0

**Elution Type:** Isocratic

**Eluent A:** Water

**Eluent B:** Methanol

Gradient Profile:	Step No.	Time (min)	Pct A	Pct B
	1	10	55	45

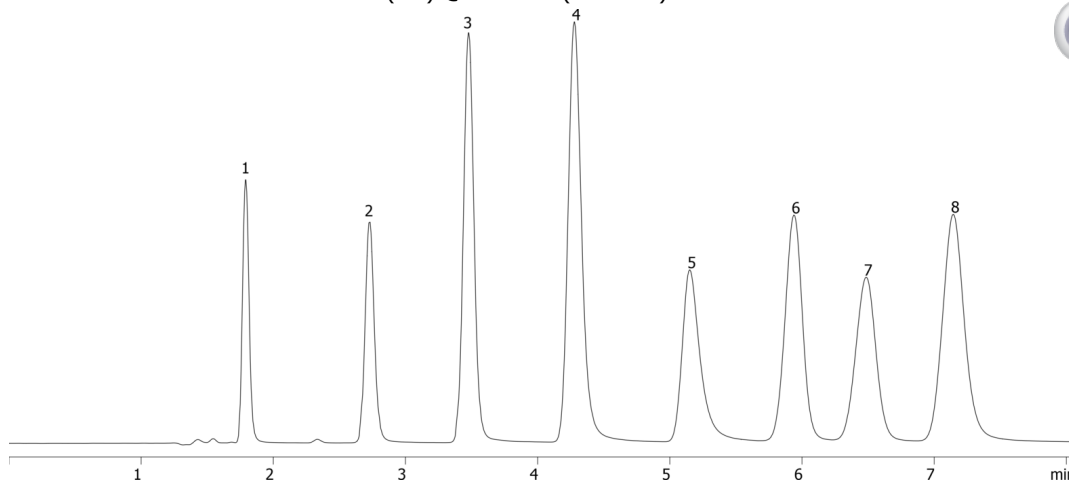
**Flow Rate:** 1 mL/min

**Col. Temp.:** ambient

**Detection:** UV-Vis Abs.-Variable Wave.(UV) @ 214 nm (ambient)



Products used in this application:



### ANALYTES:

- 1 HMX
- 2 RDX
- 3 1,3,5-Trinitrobenzene
- 4 Nitrobenzene
- 5 2,4,6-Trinitrotoluene
- 6 2-Amino-4,6-dinitrotoluene
- 7 2,4-Dinitrotoluene

