

HPLC Application

ID No.: 23095

Bupropion Extracted from Urine using Strata X-CW and Kinetex 5u EVO C18

Column: Kinetex[®] 5 μ m EVO C18 100 Å, LC Column 150 x 4.6 mm, Ea

Dimensions: 150 x 4.6 mm ID

Order No: 00F-4633-E0

Elution Type: Gradient

Eluent A: 5mM Ammonium Bicarbonate pH 9.0

Eluent B: Methanol

| Gradient Profile: | Step No. | Time (min) | Pct A | Pct B |
|-------------------|----------|------------|-------|-------|
| | 1 | 0 | 50 | 50 |
| | 2 | 10 | 20 | 80 |

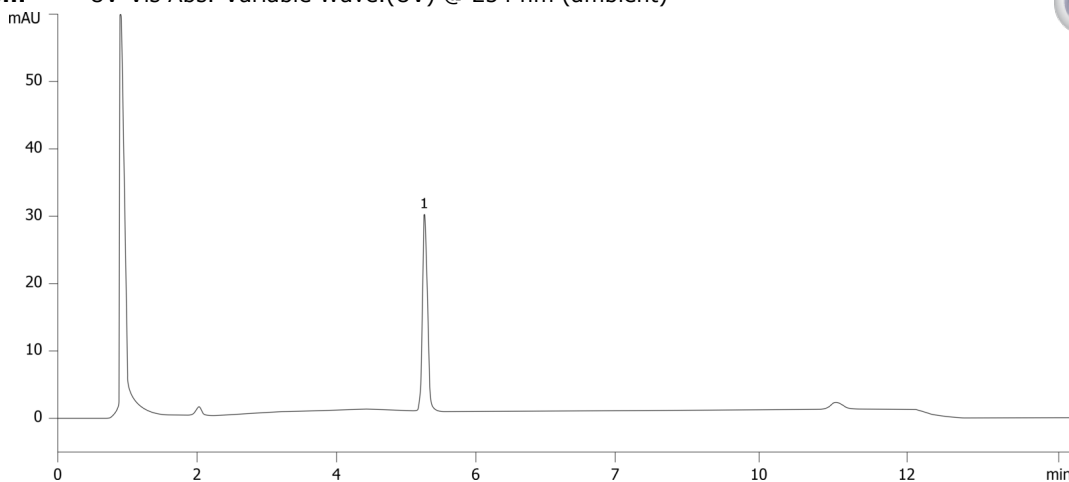
Flow Rate: 1 mL/min

Col. Temp.: ambient

Detection: UV-Vis Abs.-Variable Wave.(UV) @ 254 nm (ambient)



Products used in this application:



ANALYTES:

1 Bupropion



Sample Preparation Details

for HPLC Application ID No.: 23095

Bupropion Extracted from Urine using Strata X-CW and Kinetex 5u EVO C18

PRODUCT DESCRIPTION:

Strata[™]-X-CW 33 µm Polymeric Weak Cation, 60 mg / 3 mL, Tubes , 50/Pk

Order No.: 8B-S035-UBJ

SOLID PHASE EXTRACTION (SPE) PROCEDURE:

Note: The solvent volumes shown below are for a 60 mg bed mass.

The solvent volumes will need to be adjusted for a smaller or larger bed mass.

Condition:

Load:

Wash:

Dry:

5 minutes

Elute:

Final Prep and Analysis:

Inject: 2 µL on HPLC UV-Vis Abs.-Variable Wave.(UV) @ 254 nm (ambient)

| ANALYTES: | Spiked Conc. (ng/mL) | Log P | pKa | % Rec | %RSC (n=0) |
|------------------|---------------------------------|--------------|------------|--------------|-----------------------|
| 1 Bupropion | 0 | | | | |

Note: This method is designed as a convenient starting point for further investigation and can be tailored to meet your extraction goals. Call your local Phenomenex Representative for assistance in method development and optimization techniques.

©2025 Phenomenex Inc. All rights reserved.

For more information contact your Phenomenex Representative at support@phenomenex.com



Phenomenex products are available worldwide.

www.phenomenex.com

support@phenomenex.com