

# HPLC Application

ID No.: 23097

## Peptide Mix on Kinetex 5u EVO C18 150x4.6mm

**Column:** Kinetex<sup>®</sup> 5 $\mu$ m EVO C18 100 Å, LC Column 150 x 4.6 mm, Ea

**Dimensions:** 150 x 4.6 mm ID

**Order No:** 00F-4633-E0

**Elution Type:** Gradient

**Eluent A:** 0.1% TFA in Water

**Eluent B:** 0.1% TFA in Acetonitrile

<b>Gradient Profile:</b>	<b>Step No.</b>	<b>Time (min)</b>	<b>Pct A</b>	<b>Pct B</b>
	<b>1</b>	0	95	5
	<b>2</b>	10	5	95
	<b>3</b>	12	5	95
	<b>4</b>	12.5	95	5
	<b>5</b>	15	95	5

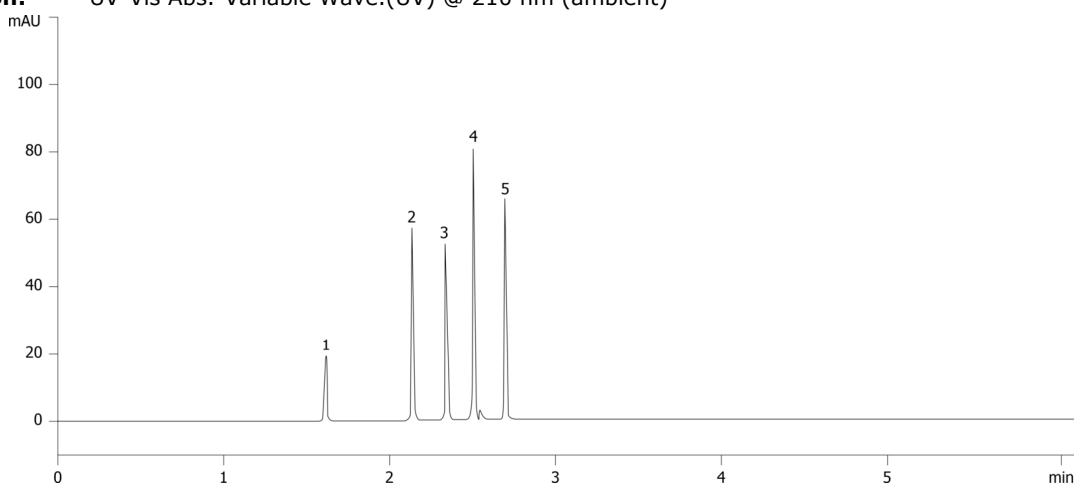
**Flow Rate:** 1 mL/min

**Col. Temp.:** ambient

**Detection:** UV-Vis Abs.-Variable Wave.(UV) @ 210 nm (ambient)



Products used in this application:



### ANALYTES:

- 1 Gly-Tyr
- 2 Val-Tyr-Val
- 3 Met-enkephalin
- 4 Leu-enkephalin
- 5 Angiotensin II

