

HPLC Application

ID No.: 23098

Tetracyclines on Kinetex 5u EVO C18 150x4.6mm

Column: Kinetex[®] 5µm EVO C18 100 Å, LC Column 150 x 4.6 mm, Ea

Dimensions: 150 x 4.6 mm ID

Order No: 00F-4633-E0

Elution Type: Gradient

Eluent A: 20mM Sodium Phosphate pH 2.0

Eluent B: Acetonitrile

Gradient Profile:	Step No.	Time (min)	Pct A	Pct B
	1	0	95	5
	2	10	5	95
	3	12	5	95
	4	12.5	95	5
	5	15	95	5

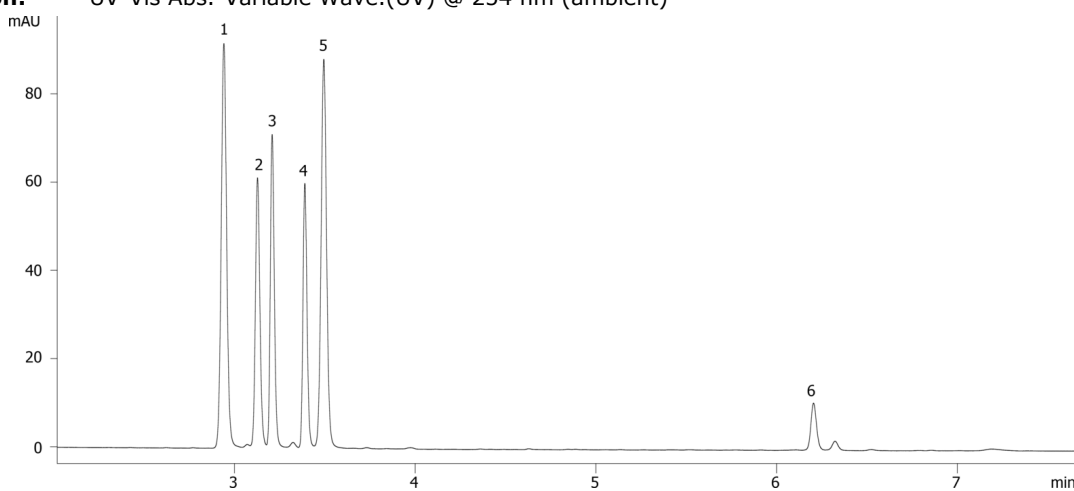
Flow Rate: 1 mL/min

Col. Temp.: ambient

Detection: UV-Vis Abs.-Variable Wave.(UV) @ 254 nm (ambient)



Products used in this application:



ANALYTES:

- 1 Sulfamerazine
- 2 Oxytetracycline
- 3 Ciprofloxacin
- 4 Enrofloxacin
- 5 Sulfamethazine
- 6 Oxacillin

