

GC Application

ID No.: 23100

Pesticides in Poultry Meat by GC/ECD on ZB-MultiResidue-1

Column: Zebtron™ ZB-MultiResidue™-1, GC Cap. Column 30 m x 0.32 mm x 0.50 μm, Ea

Phase: Proprietary Pesticides Phase

Dimensions: 30 meters x 0.32 mm x 0.5 μm

Order No: 7HM-G016-17

Oven Profile: 150 °C for 0.5 min to 20 °C/min to 220 °C hold 0 min, 6 °C, to 310 °C hold time: 0 min

Carrier Gas: Ramp Flow Helium, 3.4 mL/min

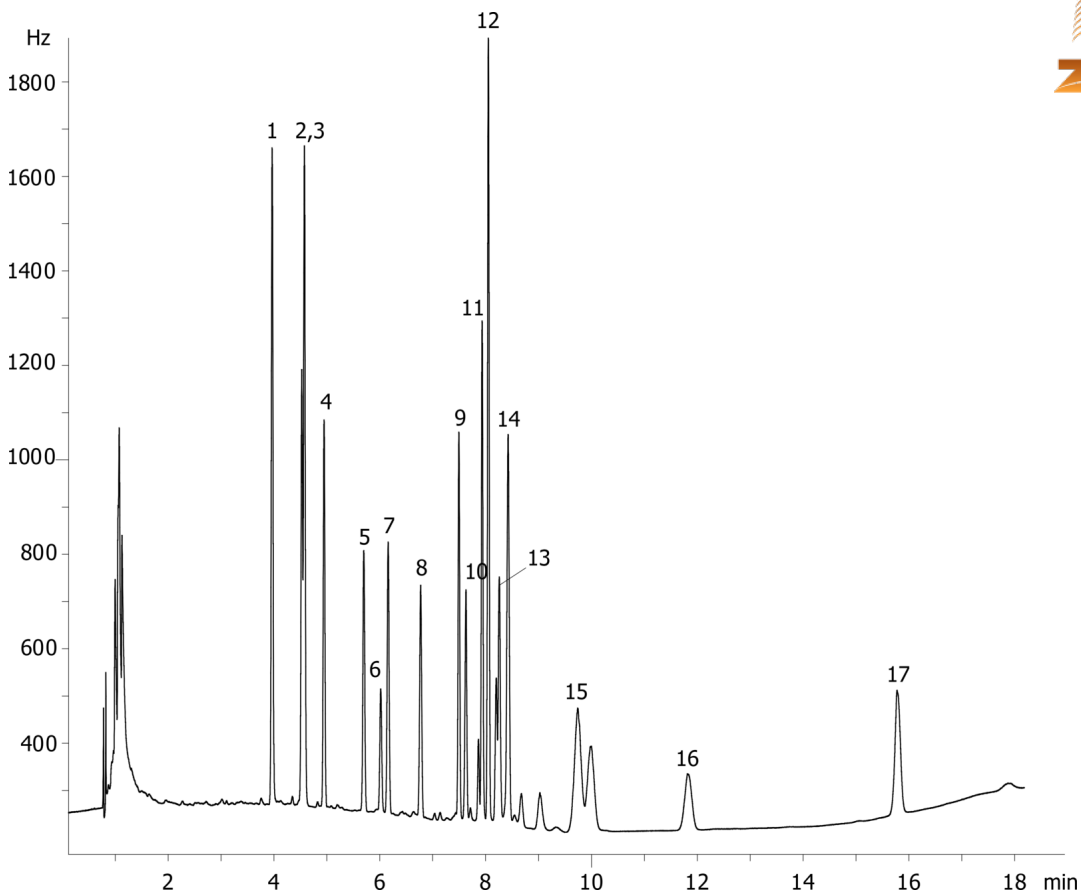
Injection: Splitless :1 1 μL @ 250°C

Detection: Electron Capture (ECD) (350°C)

Analyst Note: Flow ramp program: 3.4ml/min ramped flow- Hold 6.00 min, ramp 5.00 mL/min to 8.00 mL/min, hold 12.08 min,



Products used in this application:



Pesticides in Poultry Meat by GC/ECD on ZB-MultiResidue-1

ANALYTES:

- 1 2,4,5,6-tetrachloro-m-xylene (Internal Standard 1)
- 2 aBHC
- 3 HCB
- 4 Lindane
- 5 Heptachlor
- 6 Drusban
- 7 Aldrin
- 8 Heptachlor Epoxide
- 9 p,p'-DDE
- 10 Dieldrin
- 11 o,p-DDT
- 12 p,p'-TDE
- 13 Endrin
- 14 p,p'-DDT
- 15 Methoxychlor
- 16 Merex
- 17 Decachlorobiphenyl (Internal Standard 2)

