

Chlorpheniramine on LUX Amylose-1 5u 250x4.6mm in NP

Column: Lux® 5 µm Amylose-1, LC Column 250 x 4.6 mm, Ea

Dimensions: 250 x 4.6 mm ID

Order No: 00G-4732-E0

Elution Type: Isocratic

Eluent A: 0.1% DEA in Hexane

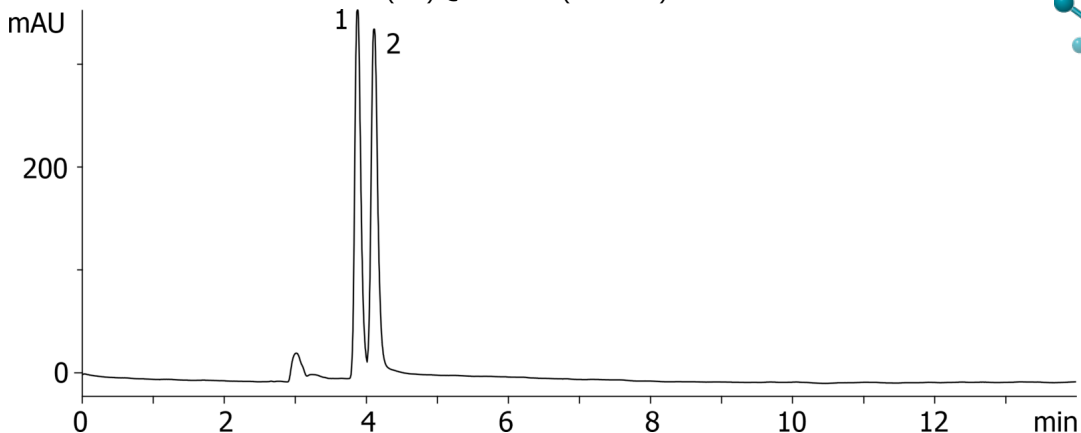
Eluent B: 0.1% DEA in IPA

| Gradient Profile: | Step No. | Time (min) | Pct A | Pct B |
|-------------------|----------|------------|-------|-------|
| | 1 | 10 | 60 | 40 |

Flow Rate: 1 mL/min

Col. Temp.: ambient

Detection: UV-Vis Abs.-Variable Wave.(UV) @ 254 nm (ambient)



Products used in this application:



ANALYTES:

- 1** Chlorpheniramine
Retention Time: 3.873 min
- 2** Chlorpheniramine
Retention Time: 4.106 min

