

# HPLC Application

ID No.: 23148

## Nicardipine on LUX Amylose-1 5u 250x4.6mm in NP

**Column:** Lux<sup>®</sup> 5 µm Amylose-1, LC Column 250 x 4.6 mm, Ea

**Dimensions:** 250 x 4.6 mm ID

**Order No:** 00G-4732-E0

**Elution Type:** Isocratic

**Eluent A:** 0.1% DEA in Hexane

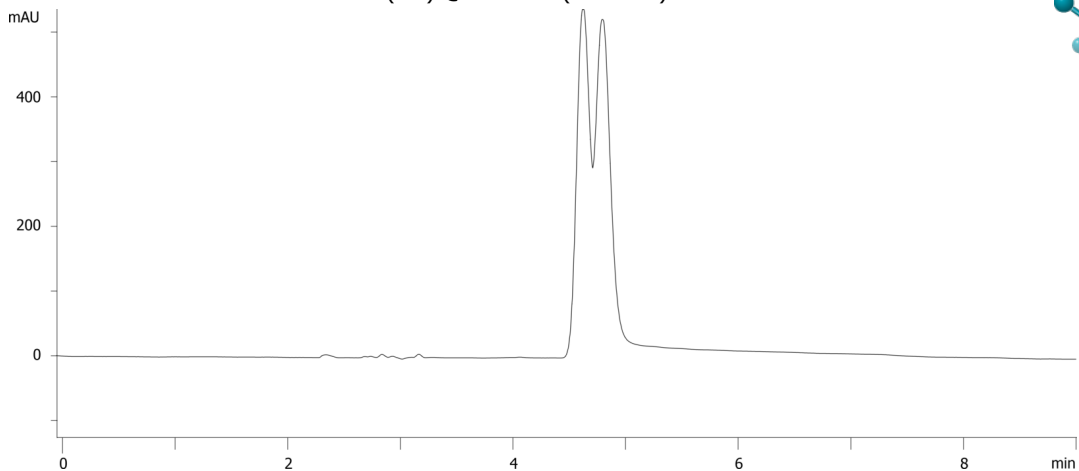
**Eluent B:** 0.1% DEA in IPA

Gradient Profile:	Step No.	Time (min)	Pct A	Pct B
	1	10	80	20

**Flow Rate:** 1 mL/min

**Col. Temp.:** ambient

**Detection:** UV-Vis Abs.-Variable Wave.(UV) @ 254 nm (ambient)



Products used in this application:



### ANALYTES:

1 Nicardipine

Retention Time: 5.173 min

2 Nicardipine

Retention Time: 5.362 min

