

Ketoprofen on LUX Amylose-1 5u 250x4.6mm in NP

Column: Lux® 5 µm Amylose-1, LC Column 250 x 4.6 mm, Ea

Dimensions: 250 x 4.6 mm ID

Order No: 00G-4732-E0

Elution Type: Isocratic

Eluent A: 0.1% Formic acid in Hexane

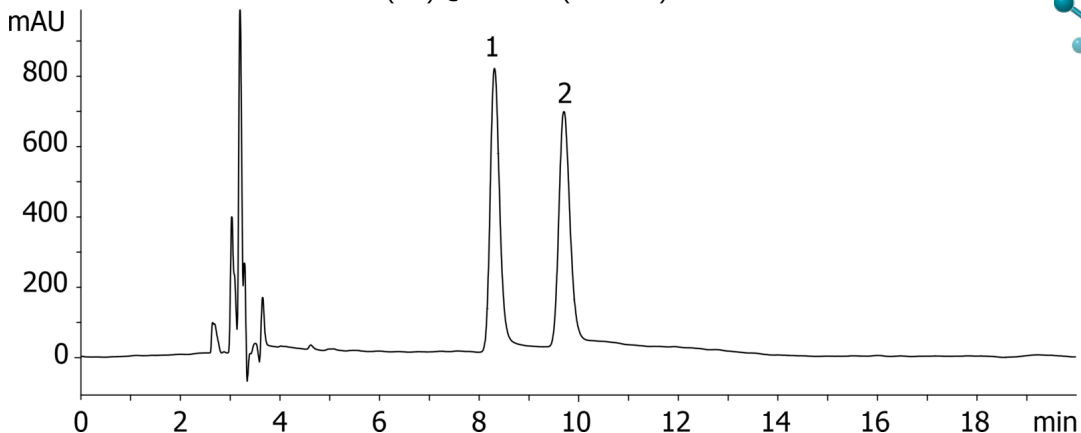
Eluent B: 0.1% Formic acid in IPA

Gradient Profile:	Step No.	Time (min)	Pct A	Pct B
	1	15	80	20

Flow Rate: 1 mL/min

Col. Temp.: ambient

Detection: UV-Vis Abs.-Variable Wave.(UV) @ 220 nm (ambient)



Products used in this application:



ANALYTES:

- 1 Ketoprofen
Retention Time: 8.305 min
- 2 Ketoprofen
Retention Time: 9.7 min