

HPLC Application

ID No.: 23165

Warfarin on LUX 5u Amylose-1 250x4.6mm in PO

Column: Lux[®] 5 µm Amylose-1, LC Column 250 x 4.6 mm, Ea

Dimensions: 250 x 4.6 mm ID

Order No: 00G-4732-E0

Elution Type: Isocratic

Eluent A: 0.1% Acetic acid in EtOH

Gradient	Step No.	Time (min)	Pct A
Profile:	1	8	100

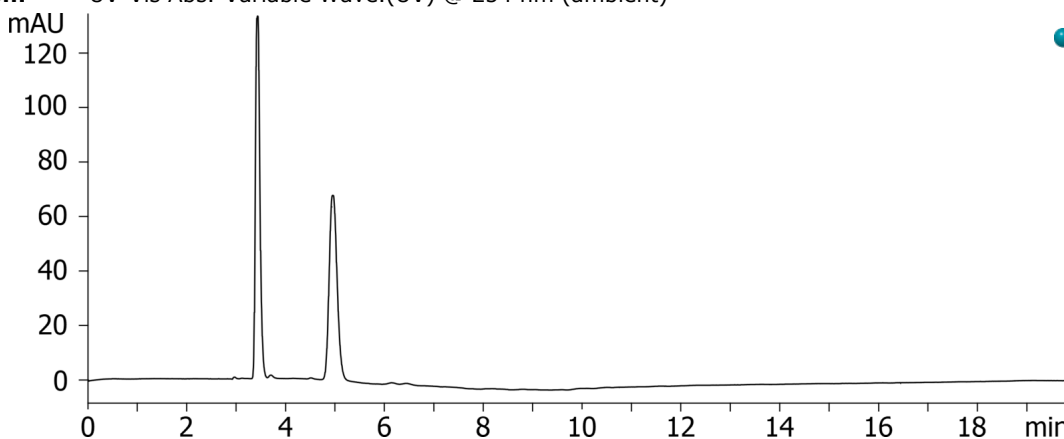
Flow Rate: 1 mL/min

Col. Temp.: ambient

Detection: UV-Vis Abs.-Variable Wave.(UV) @ 254 nm (ambient)



Products used in this application:



ANALYTES:

1 Warfarin

Retention Time: 3.429 min

2 Warfarin

Retention Time: 4.954 min

