

Paroxetine and Related C on Lux Amylose-1 USP Mobile Phase

Column: Lux® 5 µm Amylose-1, LC Column 250 x 4.6 mm, Ea

Dimensions: 250 x 4.6 mm ID

Order No: 00G-4732-E0

Elution Type: Isocratic

Eluent A: hexane 0.2%TFA

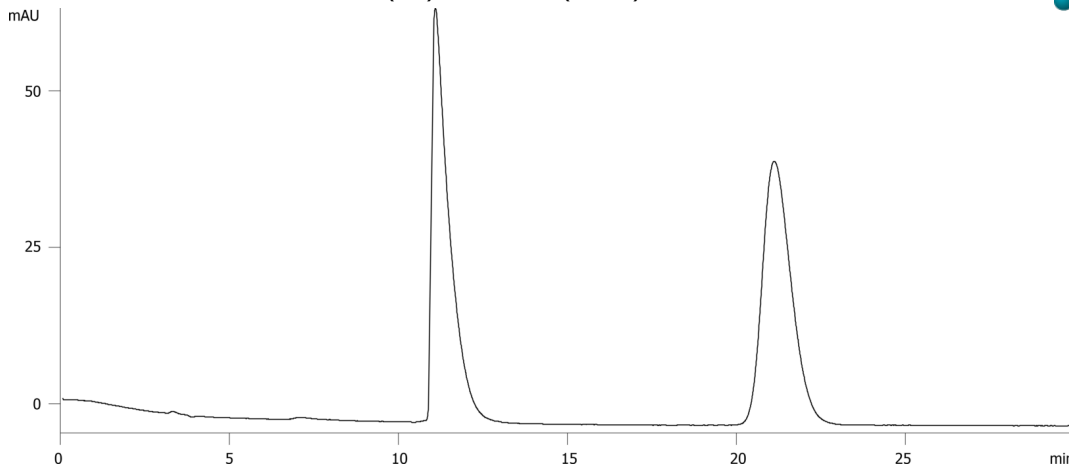
Eluent B: Ethanol 0.2%TFA 0.2% water

Gradient Profile:	Step No.	Time (min)	Pct A	Pct B
	1	0	90	10

Flow Rate: 1 mL/min

Col. Temp.: ambient

Detection: UV-Vis Abs.-Variable Wave.(UV) @ 295 nm (30 °C)



Products used in this application:



ANALYTES:

1 Related Compound C

Retention Time: 11.023 min

2 Paroxetine

Retention Time: 21.036 min

