

Atorvastatin and Related E on Lux Amylose-1 USP Mobile Phase

Column: Lux® 5 µm Amylose-1, LC Column 250 x 4.6 mm, Ea

Dimensions: 250 x 4.6 mm ID

Order No: 00G-4732-E0

Elution Type: Isocratic

Eluent A: hexane 0.1%TFA

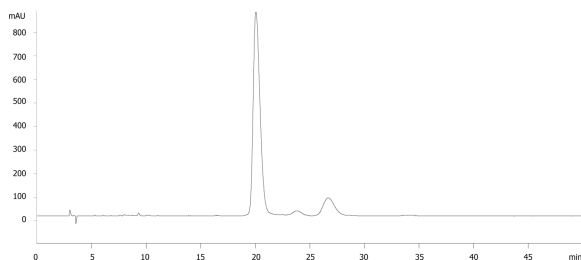
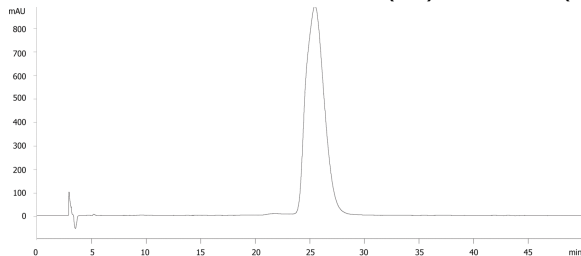
Eluent B: Ethanol 0.1%TFA

Gradient Profile:	Step No.	Time (min)	Pct A	Pct B
	1	0	94	6

Flow Rate: 1 mL/min

Col. Temp.: ambient

Detection: UV-Vis Abs.-Variable Wave.(UV) @ 244 nm (25 °C)



ANALYTES:

1 Related Compound E

Retention Time: 20.08 min

2 Atorvastatin

Retention Time: 27.488 min



Products used in this application:

