

HPLC Application

ID No.: 23179

Brinzolamide and Related A on Lux Amylose-1 USP Mobile Phase

Column: Lux[®] 5 µm Amylose-1, LC Column 250 x 4.6 mm, Ea

Dimensions: 250 x 4.6 mm ID

Order No: 00G-4732-E0

Elution Type: Isocratic

Eluent A: hexane 0.2%DEA

Eluent B: Ethanol 0.2%DEA

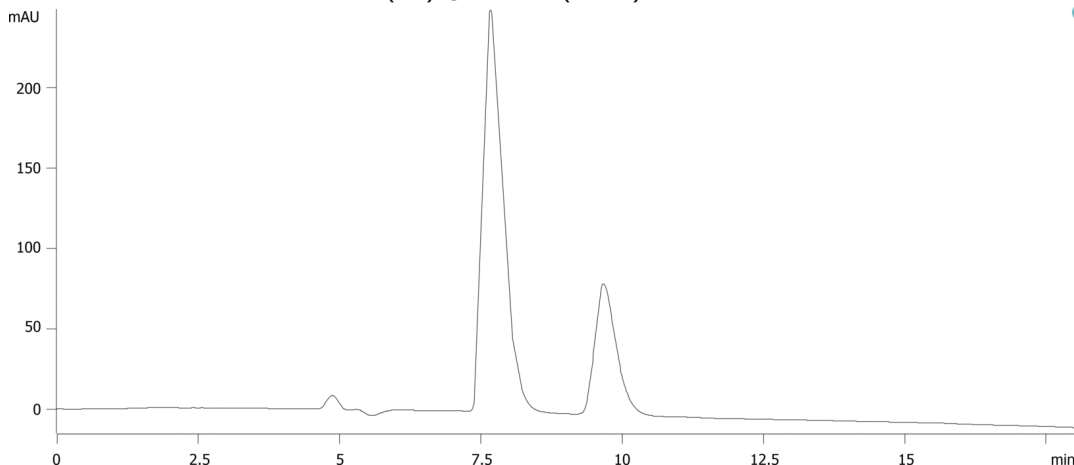
Eluent C: Methanol 0.2%DEA

Gradient Profile:	Step No.	Time (min)	Pct A	Pct B	Pct C
	1	0	50	45	5

Flow Rate: 1 mL/min

Col. Temp.: ambient

Detection: UV-Vis Abs.-Variable Wave.(UV) @ 254 nm (25 °C)



Products used in this application:



ANALYTES:

- 1** brinzolamide
Retention Time: 6.811 min
- 2** Related Compound A
Retention Time: 8.583 min