

# HPLC Application

ID No.: 23182

## Pindolol on LUX Amylose-1 5u 250x4.6mm in PO

**Column:** Lux<sup>®</sup> 5 µm Amylose-1, LC Column 250 x 4.6 mm, Ea

**Dimensions:** 250 x 4.6 mm ID

**Order No:** 00G-4732-E0

**Elution Type:** Isocratic

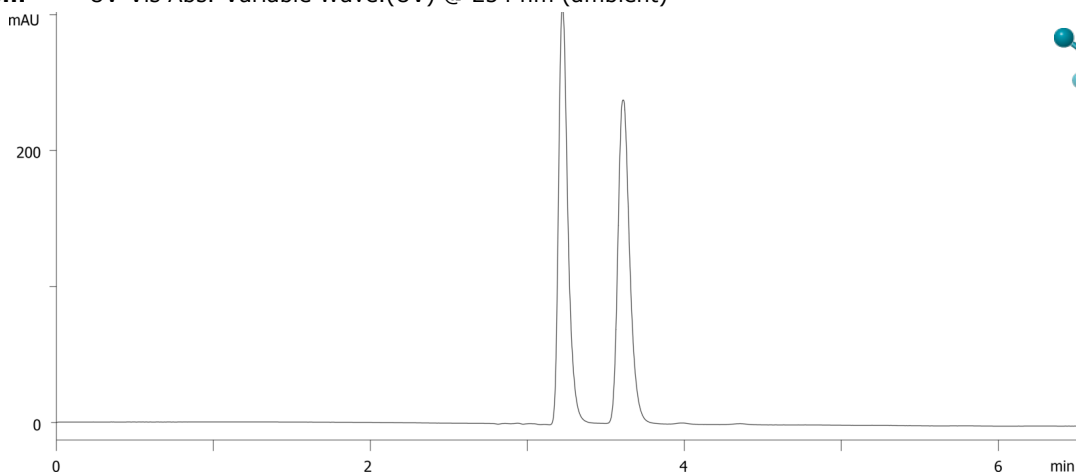
**Eluent A:** 0.1% ethylamine in MeOH

Gradient	Step No.	Time (min)	Pct A
<b>Profile:</b>	<b>1</b>	5	100

**Flow Rate:** 1 mL/min

**Col. Temp.:** ambient

**Detection:** UV-Vis Abs.-Variable Wave.(UV) @ 254 nm (ambient)



Products used in this application:



### ANALYTES:

- 1** Pindolol  
Retention Time: 3.225 min
- 2** Pindolol  
Retention Time: 3.61 min