

HPLC Application

ID No.: 23184

Propranolol on LUX Amylose-1 5u 250x4.6mm in PO

Column: Lux[®] 5 μ m Amylose-1, LC Column 250 x 4.6 mm, Ea

Dimensions: 250 x 4.6 mm ID

Order No: 00G-4732-E0

Elution Type: Isocratic

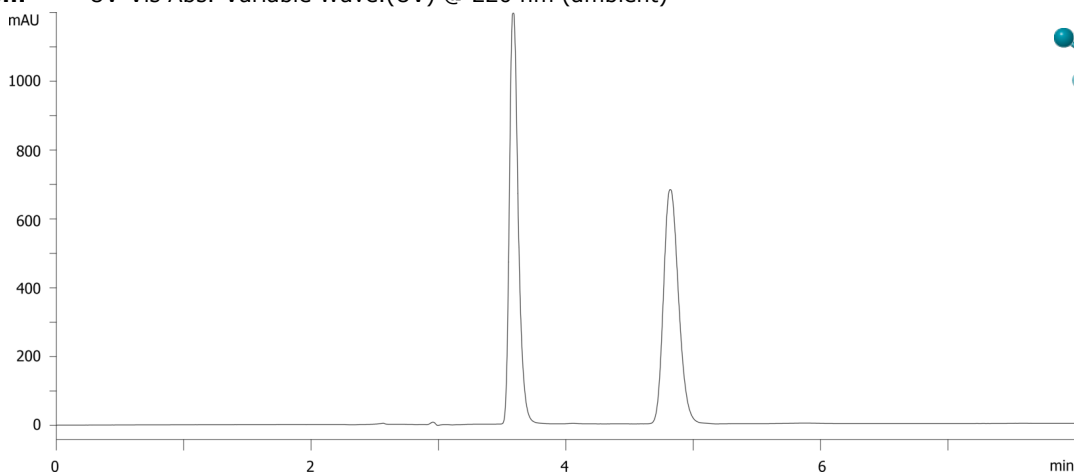
Eluent A: 0.1% ethylamine in MeOH

Gradient	Step No.	Time (min)	Pct A
Profile:	1	8	100

Flow Rate: 1 mL/min

Col. Temp.: ambient

Detection: UV-Vis Abs.-Variable Wave.(UV) @ 220 nm (ambient)



Products used in this application:



ANALYTES:

- 1** Propranolol
Retention Time: 3.588 min
- 2** Propranolol
Retention Time: 4.818 min