

HPLC Application

ID No.: 23187

Nadolol on LUX Amylose-1 5u 250x4.6mm in PO

Column: Lux[®] 5 µm Amylose-1, LC Column 250 x 4.6 mm, Ea

Dimensions: 250 x 4.6 mm ID

Order No: 00G-4732-E0

Elution Type: Isocratic

Eluent A: 0.1% ethylamine in Acetonitrile

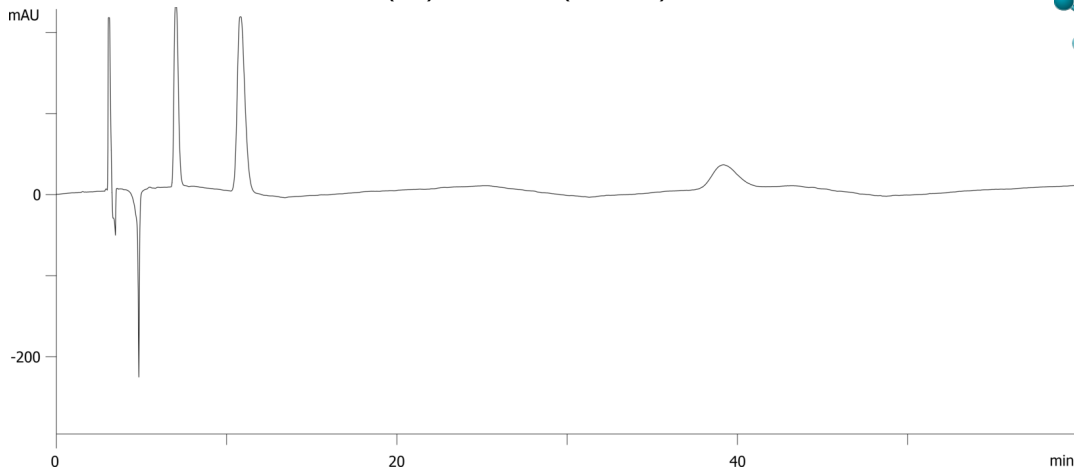
Eluent B: 0.1% ethylamine in 1-butanol

Gradient Profile:	Step No.	Time (min)	Pct A	Pct B
	1	50	95	5

Flow Rate: 1 mL/min

Col. Temp.: ambient

Detection: UV-Vis Abs.-Variable Wave.(UV) @ 220 nm (ambient)



Products used in this application:



ANALYTES:

- 1** Nadolol
Retention Time: 7.056 min
- 2** Nadolol
Retention Time: 10.855 min
- 3** Nadolol
Retention Time: 10.855 min
- 4** Nadolol
Retention Time: 39.278 min