

# HPLC Application

ID No.: 23189

## Nadolol on LUX Amylose-1 5u 250x4.6mm in PO

**Column:** Lux<sup>®</sup> 5 µm Amylose-1, LC Column 250 x 4.6 mm, Ea

**Dimensions:** 250 x 4.6 mm ID

**Order No:** 00G-4732-E0

**Elution Type:** Isocratic

**Eluent A:** 0.1% ethylamine in Acetonitrile

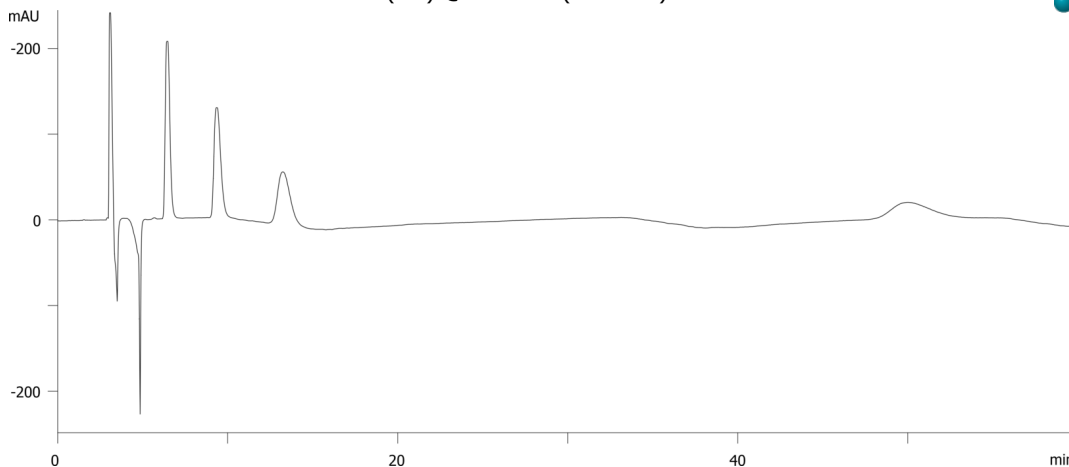
**Eluent B:** 0.1% ethylamine in 2-propanol

Gradient Profile:	Step No.	Time (min)	Pct A	Pct B
	1	60	95	5

**Flow Rate:** 1 mL/min

**Col. Temp.:** ambient

**Detection:** UV-Vis Abs.-Variable Wave.(UV) @ 220 nm (ambient)



Products used in this application:



### ANALYTES:

- 1** Nadolol  
Retention Time: 6.463 min
- 2** Nadolol  
Retention Time: 9.383 min
- 3** Nadolol  
Retention Time: 13.27 min
- 4** Nadolol  
Retention Time: 50.126 min