

Fulvestrant and Fulvestrant enantiomer Lux Amylose 1 USP System Suitability

Column: Lux® 5 µm Amylose-1, LC Column 250 x 4.6 mm, Ea

Dimensions: 250 x 4.6 mm ID

Order No: 00G-4732-E0

Elution Type: Isocratic

Eluent A: 2-methylpentane

Eluent B: Ethanol

Gradient Profile:	Step No.	Time (min)	Pct A	Pct B
	1	0	88	12

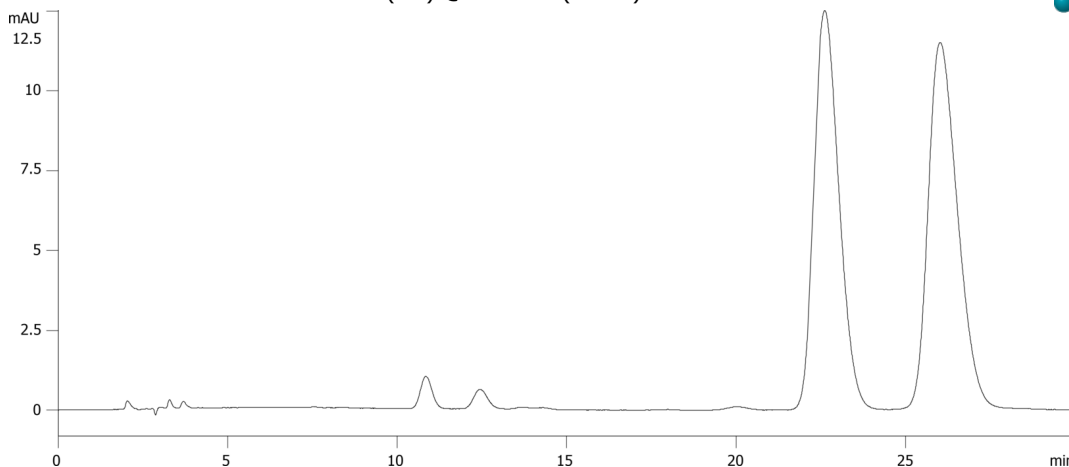
Flow Rate: 1 mL/min

Col. Temp.: 40 °C

Detection: UV-Vis Abs.-Variable Wave.(UV) @ 280 nm (25 °C)



Products used in this application:



ANALYTES:

- 1 Fulvestrant enantiomer

Retention Time: 22.57 min

- 2 Fulvestrant

Retention Time: 25.578 min

