

## Levetiracetam and Levetiracetam enantiomer Lux Amylose-1 USP System Suitability

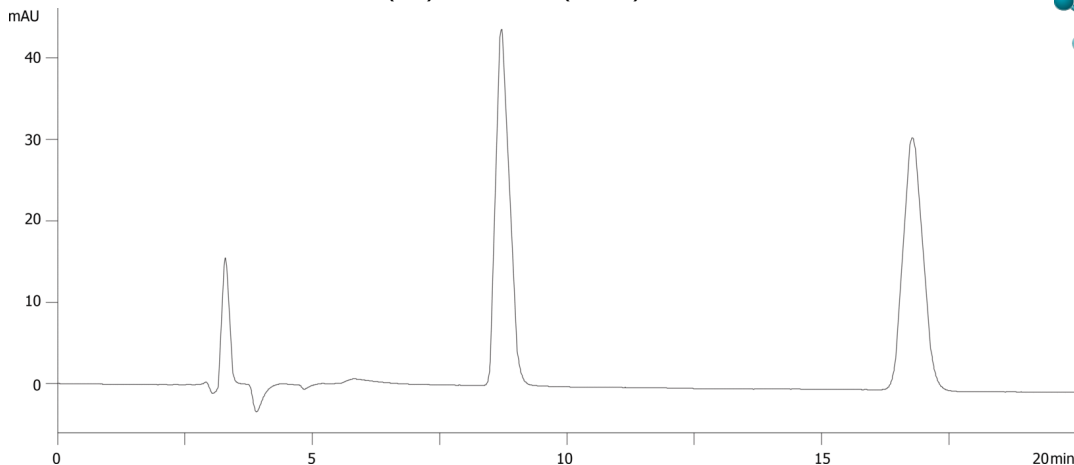
**Column:** Lux® 5 µm Amylose-1, LC Column 250 x 4.6 mm, Ea  
**Dimensions:** 250 x 4.6 mm ID  
**Order No:** 00G-4732-E0  
**Elution Type:** Isocratic  
**Eluent A:** hexane  
**Eluent B:** Ethanol  
**Gradient**

Step No.	Time (min)	Pct A	Pct B
1	0	80	20

**Profile:**  
**Flow Rate:** 1 mL/min  
**Col. Temp.:** 25 °C  
**Detection:** UV-Vis Abs.-Variable Wave.(UV) @ 215 nm (25 °C)



Products used in this application:



### ANALYTES:

1 levetiracetam enantiomer

Retention Time: 8.715 min

2 levetiracetam

Retention Time: 16.782 min

