

## Tumeric pill Analysis on Kinetex 2.6u Biphenyl 150x4.6mm

**Column:** Kinetex® 2.6 µm Biphenyl 100 Å, LC Column 150 x 4.6 mm, Ea

**Dimensions:** 150 x 4.6 mm ID

**Order No:** 00F-4622-E0

**Elution Type:** Gradient

**Eluent A:** 0.1% Formic Acid in Water

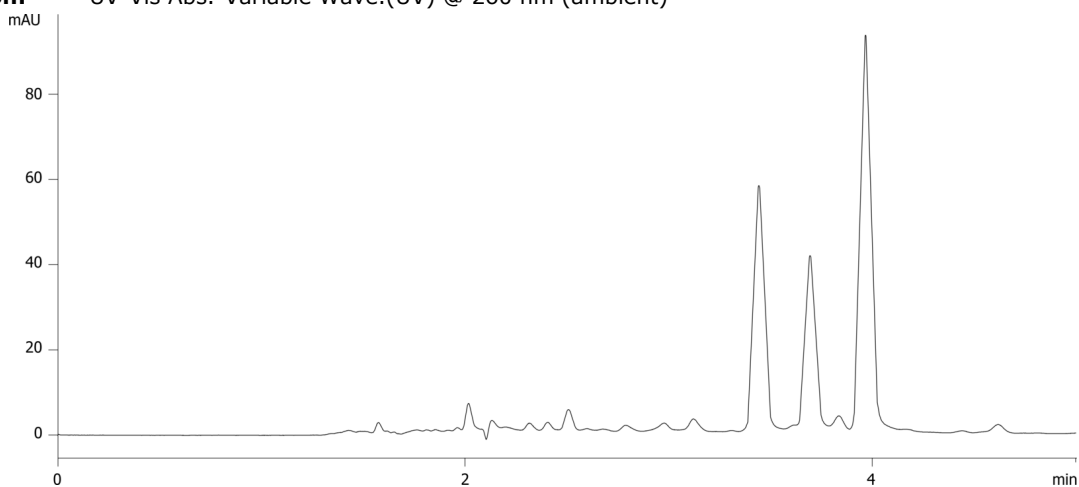
**Eluent B:** Acetonitrile

Gradient Profile:	Step No.	Time (min)	Pct A	Pct B
	1	0	45	55
	2	8	30	70
	3	9	0	100
	4	10	0	100
	5	10.1	45	55
	6	13	45	55

**Flow Rate:** 1 mL/min

**Col. Temp.:** ambient

**Detection:** UV-Vis Abs.-Variable Wave.(UV) @ 260 nm (ambient)



### ANALYTES:

- 1 Bis-demethoxycurcumin
- 2 Demethoxycurcumin
- 3 Curcumin



Products used in this application:

