

## Cannabinoids from Food using roQ and ZB-5MSplus

**Column:** Zebtron™ ZB-5MSplus, GC Cap. Column 30 m x 0.25 mm x 0.25 µm, Ea

**Phase:**

**Dimensions:** 30 meters x 0.25 mm x 0.25 µm

**Order No:** 7HG-G030-11

**Oven Profile:** 100 °C for 1 min to 320 °C at 50 °C/min hold for 2 min.

**Carrier Gas:** Constant Flow Helium, 1.5 mL/min

**Injection:** Splitless :1 1 µL @ 250°C

**Detection:** Mass Selective (MSD) (320°C)

**Analyst Note:** Sample preparation: Combine 1 g of chocolate brownie with 10 mL of water in a 50 mL centrifuge tube. Shake using mechanical shaker until dissolved. Add EN15662 roQ quechers extraction salt packet (KS0-8909) and 10 mL of acetonitrile. Shake tube for 3 min using mechanical shaker. Centrifuge at 2700 rpm for 5 min. Transfer 1 mL of supernatant to an autosampler vial for GC/MS analysis.

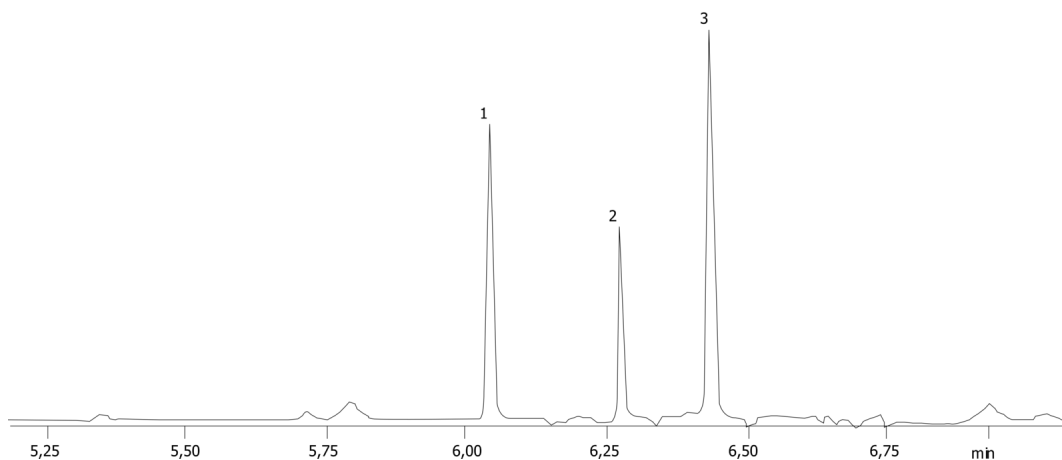
Brownie contained 1 µg/g cannabinoids.



Products used in this application:



23229



### ANALYTES:

- 1 Cannabidiol
- 2 delta-9-Tetrahydrocannabinol
- 3 Cannabinol