

GC Application

ID No.: 23246

Ethanolamines using ZB-5MSplus 30 x 0.25 x 1.00

Column: Zebtron[™] ZB-5MSplus, GC Cap. Column 30 m x 0.25 mm x 1.00 μ m, Ea

Phase:

Dimensions: 30 meters x 0.25 mm x 1 μ m

Order No: 7HG-G030-22

Oven Profile: 30 °C to 300 °C at 40 °C/min

Carrier Gas: Constant Flow Helium, 1.4 mL/min

Injection: Split 200:1 1 μ L @ 250°C

Detection: Mass Selective (MSD) (320°C)

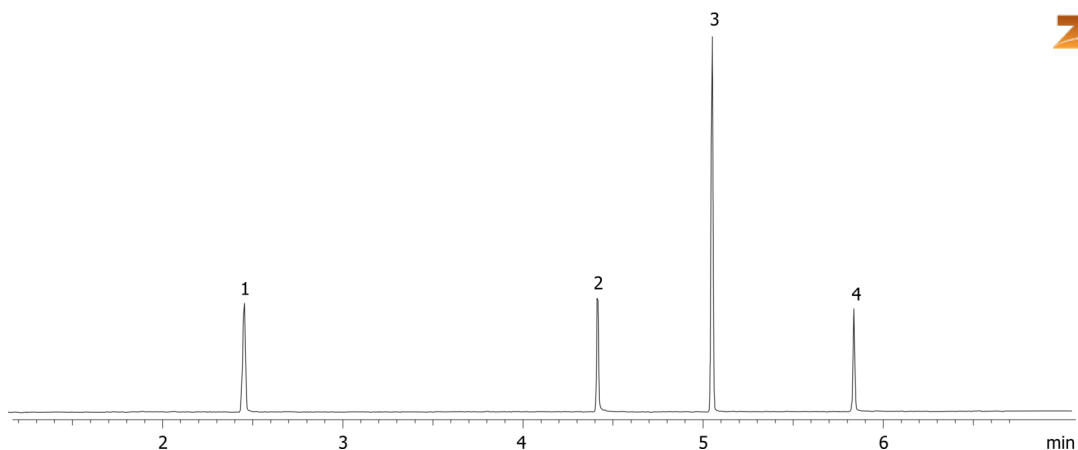
Analyst Note: Sim mode: Monoethanolamine (61,42), Diethanolamine (74, 56), Triethyleneglycol monomethylether (45,59,84),



Products used in this application:



23246



ANALYTES:

- 1 Monoethanolamine
- 2 Diethanolamine
- 3 Triethylene glycol monomethyl ether (I.S.)
- 4 Triethanolamine

