

Metroprolol on Lux 5µm Amylose-1 by SFC

Column: Lux® 5 µm Amylose-1, LC Column 250 x 4.6 mm, Ea

Dimensions: 250 x 4.6 mm ID

Order No: 00G-4732-E0

Elution Type: Isocratic

Eluent A: CO₂/(Isopropanol + 0.5% IPA) 80:20 (v/v)

Gradient	Step No.	Time (min)	Pct A
Profile:	1	0	100

Flow Rate: 3 mL/min

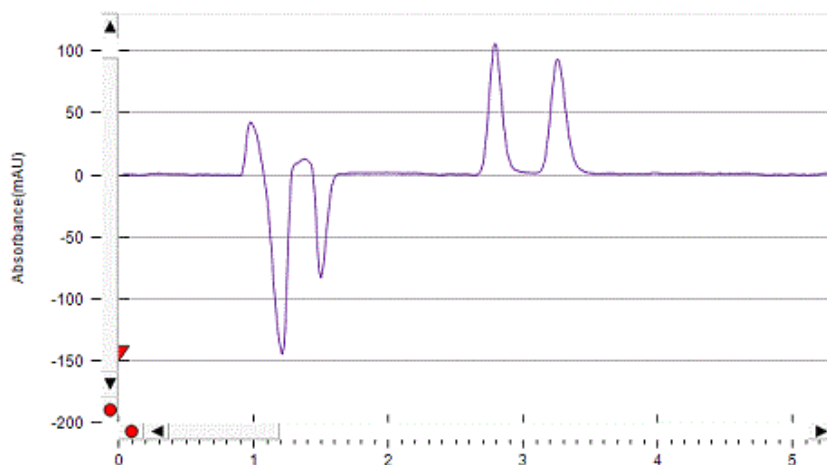
Col. Temp.: 30 °C

Detection: UV-Vis Abs.-Diode Array (PDA) @ 220 nm (30 °C)

Analyst Note: Courtesy of Tanika Van Mulders, Debby Mangelings and Yvan Vander Heyden, Department of Analytical Chemistry and Pharmaceutical Technology, Vrije Universiteit Brussel, Brussels, Belgium.
Results of this analysis yielded: Alpha >1.1 and Resolution >2



Products used in this application:



ANALYTES:

- 1 Metroprolol
- 2 Metroprolol