

# HPLC Application

ID No.: 23333

## Tertatolol on Lux 5 $\mu$ m Amylose-1 by SFC

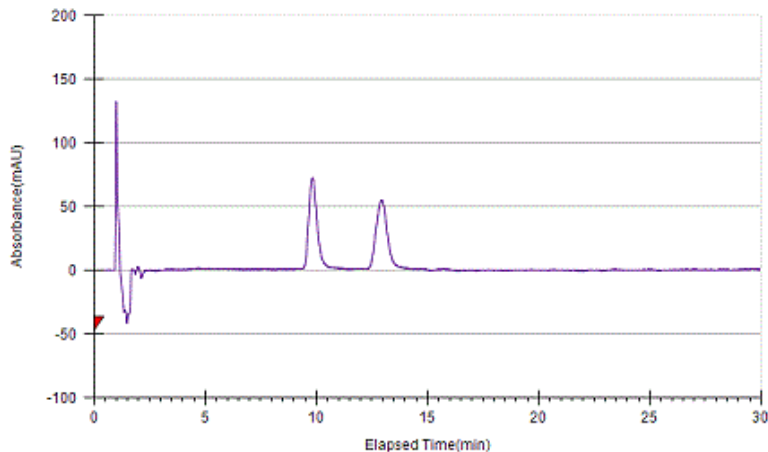
**Column:** Lux<sup>®</sup> 5  $\mu$ m Amylose-1, LC Column 250 x 4.6 mm, Ea  
**Dimensions:** 250 x 4.6 mm ID  
**Order No:** 00G-4732-E0  
**Elution Type:** Isocratic  
**Eluent A:** CO<sub>2</sub>/(Isopropanol + 0.25% IPA + 0.25%TFA) 90:10 (v/v)  
**Gradient**

Step No.	Time (min)	Pct A
1	0	100

**Profile:**  
**Flow Rate:** 3 mL/min  
**Col. Temp.:** 30 °C  
**Detection:** UV-Vis Abs.-Diode Array (PDA) @ 220 nm (30 °C)  
**Analyst Note:** Courtesy of Tanika Van Mulders, Debby Mangelings and Yvan Vander Heyden, Department of Analytical Chemistry and Pharmaceutical Technology, Vrije Universiteit Brussel, Brussels, Belgium.  
Results of this analysis yielded: Alpha >1.1 and Resolution >2



Products used in this application:



### ANALYTES:

- 1 Tertatolol
- 2 Tertatolol

