

# HPLC Application

ID No.: 23336

## Isothipendyl on Lux 5 $\mu$ m Amylose-1 by SFC

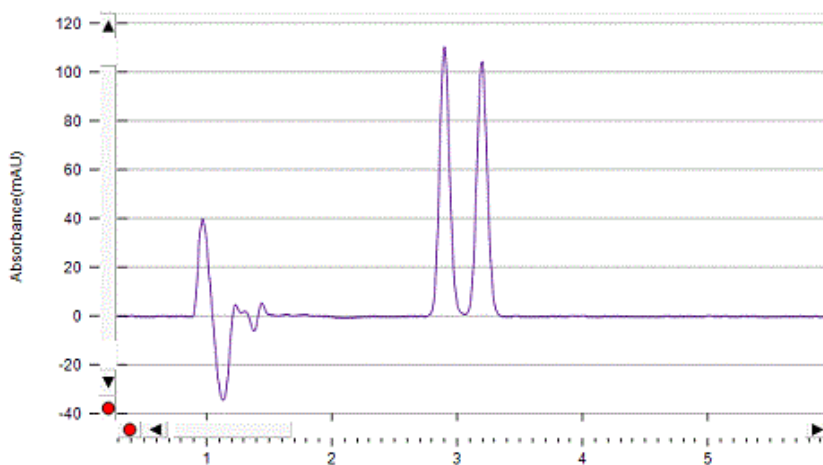
**Column:** Lux<sup>®</sup> 5  $\mu$ m Amylose-1, LC Column 250 x 4.6 mm, Ea  
**Dimensions:** 250 x 4.6 mm ID  
**Order No:** 00G-4732-E0  
**Elution Type:** Isocratic  
**Eluent A:** CO<sub>2</sub>/(Isopropanol + 0.1% IPA +0.1%TFA) 80:20 (v/v)  
**Gradient**

| Step No. | Time (min) | Pct A |
|----------|------------|-------|
| 1        | 0          | 100   |

**Profile:**  
**Flow Rate:** 3 mL/min  
**Col. Temp.:** 30 °C  
**Detection:** UV-Vis Abs.-Diode Array (PDA) @ 220 nm (30 °C)  
**Analyst Note:** Courtesy of Tanika Van Mulders, Debby Mangelings and Yvan Vander Heyden, Department of Analytical Chemistry and Pharmaceutical Technology, Vrije Universiteit Brussel, Brussels, Belgium.  
Results of this analysis yielded: Alpha >1.1 and Resolution >2



Products used in this application:



### ANALYTES:

- 1 Isothipendyl
- 2 Isothipendyl