

Fast Organic Acids Analysis in Wine - Cal 1

Column: Synergi™ 4 µm Hydro-RP 80 Å, LC Column 250 x 4.6 mm, Ea

Dimensions: 250 x 4.6 mm ID

Order No: 00G-4375-E0

Elution Type: Gradient

Eluent A: 20mM potassium phosphate, pH 1.5

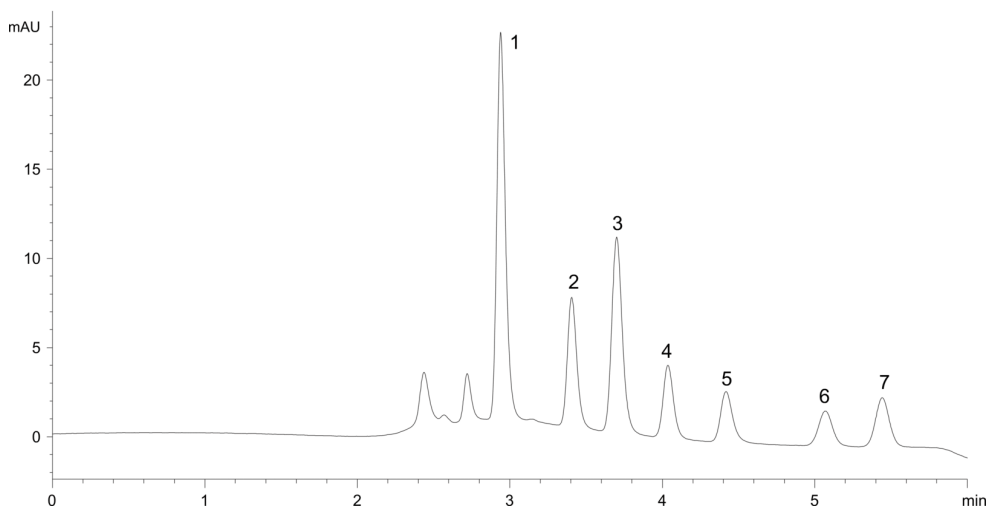
Eluent B: Methanol

Gradient Profile:	Step No.	Time (min)	Pct A	Pct B
	1	0	100	0
	2	2.5	100	0
	3	2.6	70	30
	4	2.9	70	30
	5	3	100	0
	6	10	100	0

Flow Rate: 1 mL/min

Col. Temp.: 60 °C

Detection: UV-Vis Abs.-Variable Wave.(UV) @ (ambient)
App ID 23345



ANALYTES:

- 1** tartaric acid
Retention Time: 2.437 min
- 2** malic acid
Retention Time: 2.72 min
- 3** shikimic acid (interferent)
Retention Time: 2.94 min
- 4** lactic acid
Retention Time: 3.405 min
- 5** acetic acid
Retention Time: 3.7 min
- 6** citric acid
Retention Time: 4.036 min
- 7** succinic acid
Retention Time: 4.417 min

