

## Fast Organic Acids Analysis in Wine - Cal 5

**Column:** Synergi™ 4 µm Hydro-RP 80 Å, LC Column 250 x 4.6 mm, Ea

**Dimensions:** 250 x 4.6 mm ID

**Order No:** 00G-4375-E0

**Elution Type:** Gradient

**Eluent A:** 20mM potassium phosphate, pH 1.5

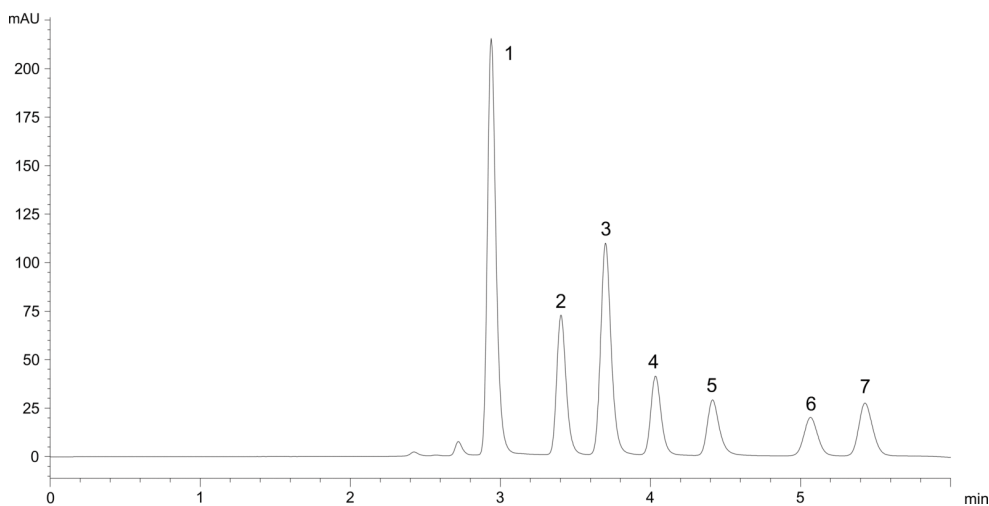
**Eluent B:** Methanol

Gradient Profile:	Step No.	Time (min)	Pct A	Pct B
	1	0	100	0
	2	2.5	100	0
	3	2.6	70	30
	4	2.9	70	30
	5	3	100	0
	6	10	100	0

**Flow Rate:** 1 mL/min

**Col. Temp.:** 60 °C

**Detection:** UV-Vis Abs.-Variable Wave.(UV) @ (ambient)  
App ID 23349



### ANALYTES:

- 1** tartaric acid  
Retention Time: 5 min
- 2** malic acid  
Retention Time: 5 min
- 3** shikimic acid (interferent)  
Retention Time: 0.05 min
- 4** lactic acid  
Retention Time: 2.5 min
- 5** acetic acid  
Retention Time: 2.5 min
- 6** citric acid  
Retention Time: 0.25 min
- 7** succinic acid  
Retention Time: 2.5 min

