

Fast Organic Acids Analysis in Wine - Pinot Noir

Column: Synergi™ 4 µm Hydro-RP 80 Å, LC Column 250 x 4.6 mm, Ea

Dimensions: 250 x 4.6 mm ID

Order No: 00G-4375-E0

Elution Type: Gradient

Eluent A: 20mM potassium phosphate, pH 1.5

Eluent B: Methanol

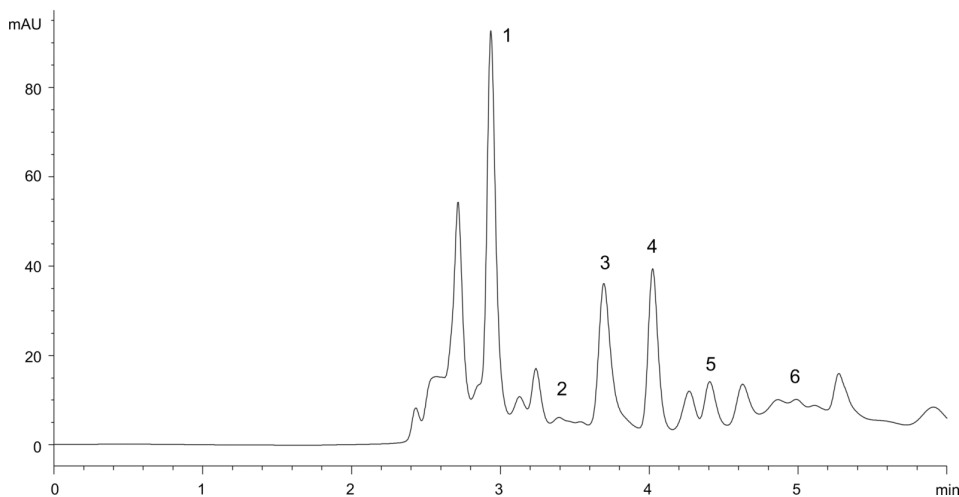
| Gradient Profile: | Step No. | Time (min) | Pct A | Pct B |
|-------------------|----------|------------|-------|-------|
| | 1 | 0 | 100 | 0 |
| | 2 | 2.5 | 100 | 0 |
| | 3 | 2.6 | 70 | 30 |
| | 4 | 2.9 | 70 | 30 |
| | 5 | 3 | 100 | 0 |
| | 6 | 10 | 100 | 0 |

Flow Rate: 1 mL/min

Col. Temp.: 60 °C

Detection: UV-Vis Abs.-Variable Wave.(UV) @ (ambient)

App ID 23353



ANALYTES:

- 1** tartaric acid
Retention Time: 5 min
- 2** malic acid
Retention Time: 5 min
- 3** shikimic acid (interferent)
Retention Time: 0.05 min
- 4** lactic acid
Retention Time: 2.5 min
- 5** acetic acid
Retention Time: 2.5 min
- 6** citric acid
Retention Time: 0.25 min
- 7** succinic acid
Retention Time: 2.5 min

