

Fast Organic Acids Analysis in Wine - Chablis

Column: Synergi™ 4 µm Hydro-RP 80 Å, LC Column 250 x 4.6 mm, Ea

Dimensions: 250 x 4.6 mm ID

Order No: 00G-4375-E0

Elution Type: Gradient

Eluent A: 20mM potassium phosphate, pH 1.5

Eluent B: Methanol

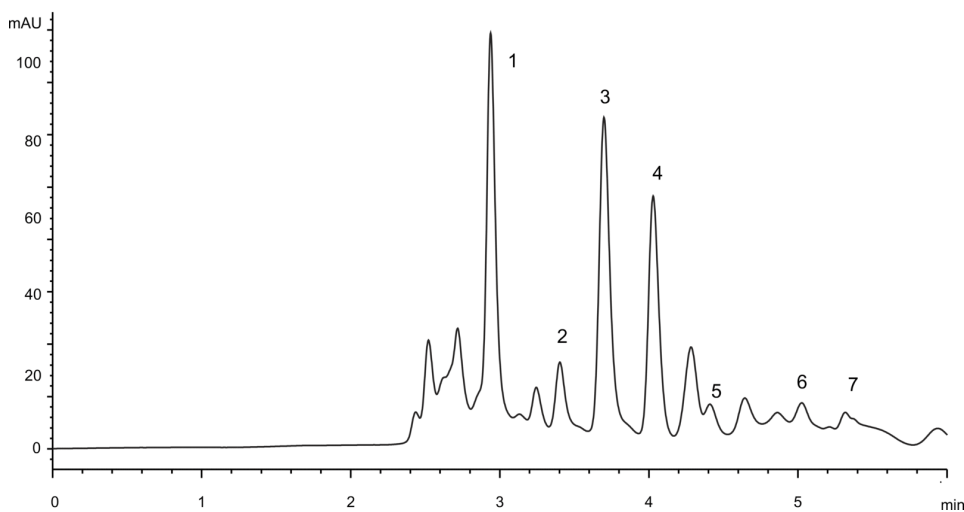
Gradient Profile:	Step No.	Time (min)	Pct A	Pct B
	1	0	100	0
	2	2.5	100	0
	3	2.6	70	30
	4	2.9	70	30
	5	3	100	0
	6	10	100	0

Flow Rate: 1 mL/min

Col. Temp.: 60 °C

Detection: UV-Vis Abs.-Variable Wave.(UV) @ (ambient)

App ID 23356



ANALYTES:

- 1 tartaric acid**
Retention Time: 5 min
- 2 malic acid**
Retention Time: 5 min
- 3 shikimic acid (interferent)**
Retention Time: 0.05 min
- 4 lactic acid**
Retention Time: 2.5 min
- 5 acetic acid**
Retention Time: 2.5 min
- 6 citric acid**
Retention Time: 0.25 min
- 7 succinic acid**
Retention Time: 2.5 min

