

HPLC Application

ID No.: 23376

Vitamin A and E from infant formula (Gerber) on Luna NH2 by UV

Column: Luna® 3 µm NH2 100 Å, LC Column 150 x 4.6 mm, Ea

Dimensions: 150 x 4.6 mm ID

Order No: 00F-4377-E0

Elution Type: Gradient

Eluent A: Hexane

Eluent B: 50 % MTBE in Hexane

| Gradient Profile: | Step No. | Time (min) | Pct A | Pct B |
|-------------------|----------|------------|-------|-------|
| | 1 | 0 | 100 | 0 |
| | 2 | 3 | 100 | 0 |
| | 3 | 8 | 0 | 100 |
| | 4 | 12 | 0 | 100 |

Flow Rate: 1 mL/min

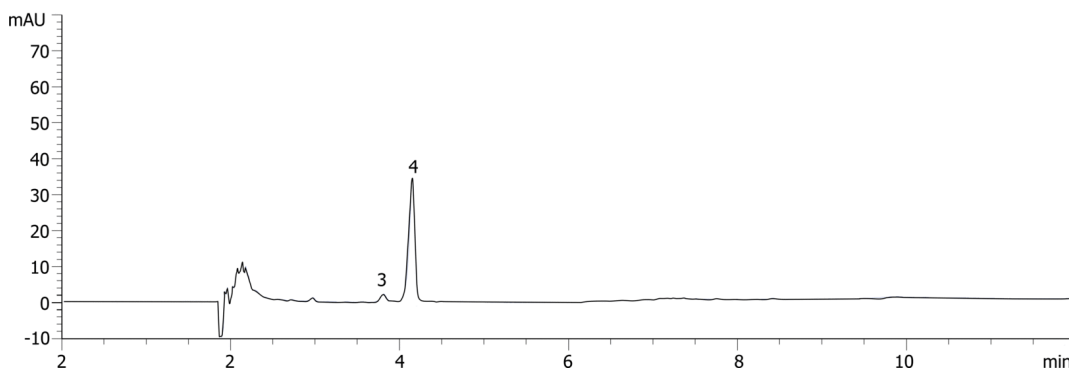
Col. Temp.: ambient

Detection: UV-Vis Abs.-Variable Wave.(UV) @ 325 nm (ambient)

Analyst Note: Sample prepared following AOAC official method 2012.10 using "Gerber good start" infant formula powder
23376



Products used in this application:



ANALYTES:

- 1 Vitamin A acetate (isomer)
- 2 Vitamin A acetate