

HPLC Application

ID No.: 23377

Vitamin A and E from infant formula (Enfamil) on Luna NH2 by UV

Column: Luna® 3 µm NH2 100 Å, LC Column 150 x 4.6 mm, Ea

Dimensions: 150 x 4.6 mm ID

Order No: 00F-4377-E0

Elution Type: Gradient

Eluent A: Hexane

Eluent B: 50 % MTBE in Hexane

Gradient Profile:	Step No.	Time (min)	Pct A	Pct B
	1	0	100	0
	2	3	100	0
	3	8	0	100
	4	12	0	100

Flow Rate: 1 mL/min

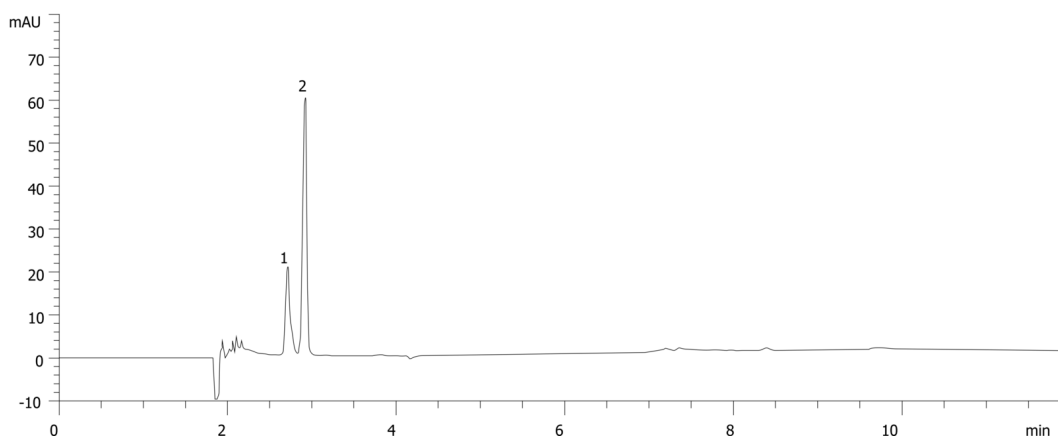
Col. Temp.: ambient

Detection: UV-Vis Abs.-Variable Wave.(UV) @ 325 nm (ambient)

Analyst Note: Sample prepared following AOAC official method 2012.10 using "Enfamil" infant formula liquid
23377



Products used in this application:



ANALYTES:

- 1 Vitamin A Palmitate (isomer)
- 2 Vitamin A Palmitate

