

# HPLC Application

ID No.: 23378

## Vitamin A and E from infant formula (Enfamil) on Luna NH2 by FLD

**Column:** Luna® 3 µm NH2 100 Å, LC Column 150 x 4.6 mm, Ea

**Dimensions:** 150 x 4.6 mm ID

**Order No:** 00F-4377-E0

**Elution Type:** Gradient

**Eluent A:** Hexane

**Eluent B:** 50 % MTBE in Hexane

Gradient Profile:	Step No.	Time (min)	Pct A	Pct B
	1	0	100	0
	2	3	100	0
	3	8	0	100
	4	12	0	100

**Flow Rate:** 1 mL/min

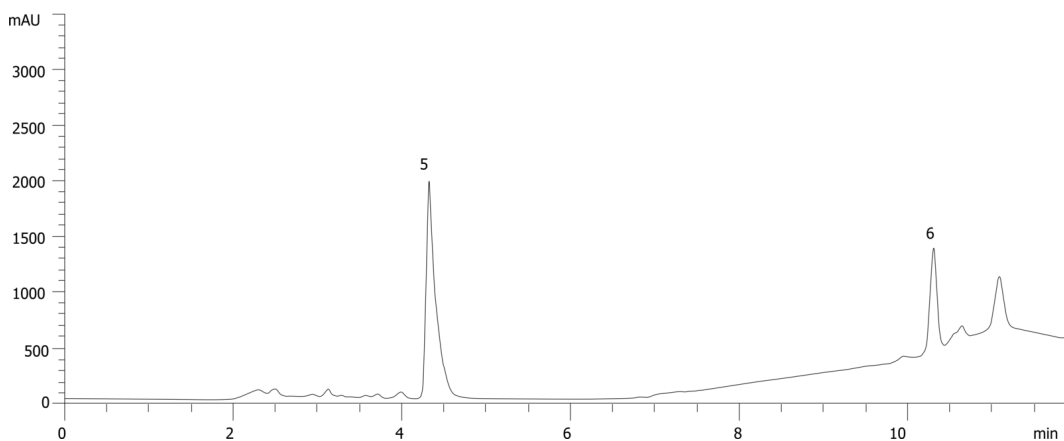
**Col. Temp.:** ambient

**Detection:** Fluorescence (FLUOR) @ 280 nm (ambient)

**Analyst Note:** Sample prepared following AOAC official method 2012.10 using "Enfamil" infant formula liquid  
23378



Products used in this application:



### ANALYTES:

- 1 Vitamin E acetate
- 2 Vitamin E

