

HPLC Application

ID No.: 23388

Mebeverine on Lux 3u Amylose-1 250x4.6mm in NP

Column: Lux[®] 5 μ m Amylose-1, LC Column 250 x 4.6 mm, Ea

Dimensions: 250 x 4.6 mm ID

Order No: 00G-4732-E0

Elution Type: Isocratic

Eluent A: 0.1% DEA in Hexane

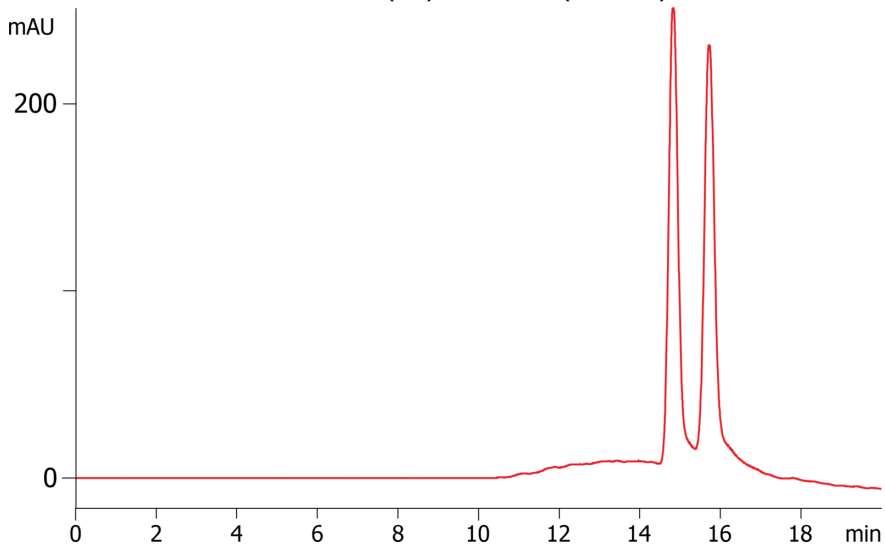
Eluent B: 0.1% DEA in IPA

Gradient Profile:	Step No.	Time (min)	Pct A	Pct B
	1	20	95	5

Flow Rate: 1 mL/min

Col. Temp.: ambient

Detection: UV-Vis Abs.-Variable Wave.(UV) @ 254 nm (ambient)



ANALYTES:

- 1** Mebeverine
Retention Time: 14.816 min
- 2** Mebeverine
Retention Time: 15.71 min



Products used in this application:

