

HPLC Application

ID No.: 23434

Phenol Selectivity Luna Omega 1.6u C18 50x2.1mm

Column: Luna Omega 1.6 μ m C18 100 \AA , LC Column 50 x 2.1 mm, Ea

Dimensions: 50 x 2.1 mm ID

Order No: 00B-4742-AN

Elution Type: Gradient

Eluent A: 0.1 Formic Acid in Water

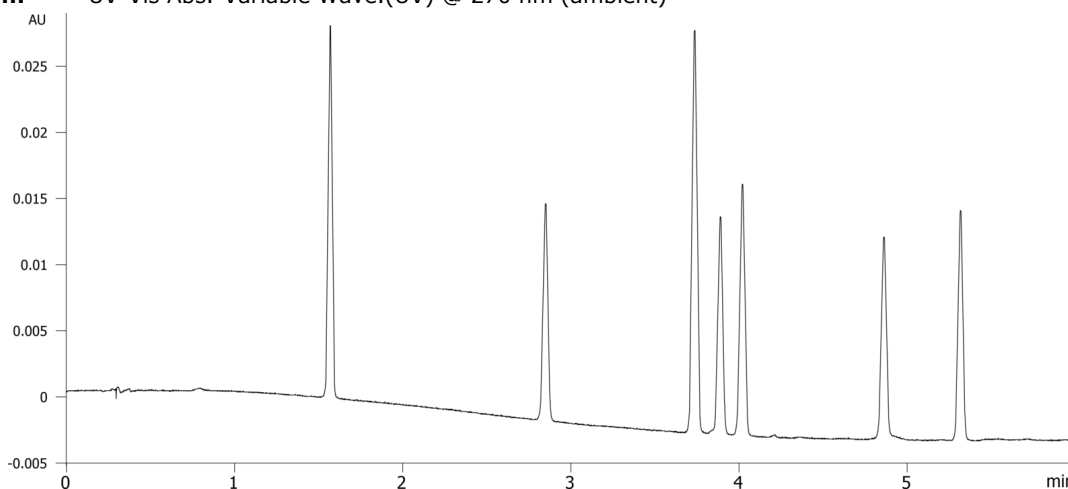
Eluent B: 0.1% Formic Acid in Acetonitrile

Gradient Profile:	Step No.	Time (min)	Pct A	Pct B
	1	0	95	5
	2	6	50	50
	3	7	50	50
	4	7.1	95	5
	5	9	95	5

Flow Rate: 0.4 mL/min

Col. Temp.: ambient

Detection: UV-Vis Abs.-Variable Wave.(UV) @ 270 nm (ambient)



ANALYTES:

- 1 3-Hydroxyphenol
- 2 Phenol
- 3 4-Nitrophenol
- 4 4-Methylphenol
- 5 2-Methylphenol
- 6 2,4-Dimethylphenol
- 7 1-Naphthol



Products used in this application:

