

HPLC Application

ID No.: 23442

Synthetic Cannabinoids by LCMS using Luna Omega 1.6u C18 50x2.1mm

Column: Luna Omega 1.6 μ m C18 100 \AA , LC Column 50 x 2.1 mm, Ea

Dimensions: 50 x 2.1 mm ID

Order No: 00B-4742-AN

Elution Type: Gradient

Eluent A: 0.1 Formic Acid in Water

Eluent B: 0.1% Formic Acid in Acetonitrile

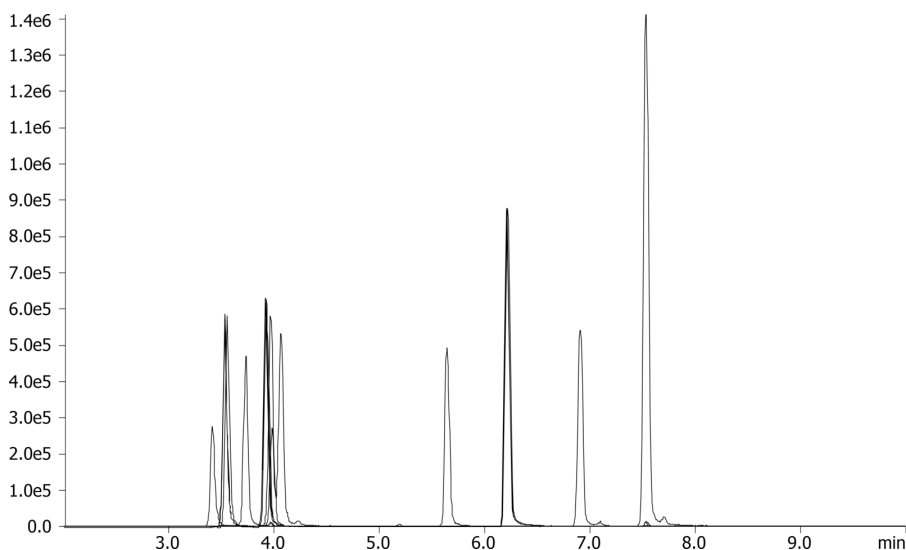
Gradient Profile:	Step No.	Time (min)	Pct A	Pct B
	1	0	50	50
	2	8	0	100

Flow Rate: 0.3 mL/min

Col. Temp.: 30 °C

Detection: Tandem Mass Spec (MS-MS) @ 254 nm (ambient)

Detector Info: API 4000



Products used in this application:



Synthetic Cannabinoids by LCMS using Luna Omega 1.6u C18 50x2.1mm

ANALYTES:

- 1** JWH-073 Butanoic acid Metabolite
- 2** JWH-073 3-hydroxybutyl metabolite (isomer to #1)
- 3** JWH-018 Pentanoic acid metabolite
- 4** JWH-073 4-hydroxybutyl metabolite
- 5** JWH-018 4-hydroxypentyl metabolite (isomer to #3)
- 6** AM-2201 4-hydroxypentyl metabolite
- 7** JWH-018 5-hydroxypentyl metabolite (isomer to #3)
- 8** AM-694
- 9** AM-2201
- 10** JWH-073
- 11** JWH-018

