

# HPLC Application

ID No.: 23443

## Drugs of Abuse by LCMS using Luna Omega 1.6u C18 50x2.1mm

**Column:** Luna Omega 1.6  $\mu$ m C18 100 Å, LC Column 50 x 2.1 mm, Ea

**Dimensions:** 50 x 2.1 mm ID

**Order No:** 00B-4742-AN

**Elution Type:** Gradient

**Eluent A:** 0.1 Formic Acid in Water

**Eluent B:** 0.1% Formic Acid in Acetonitrile

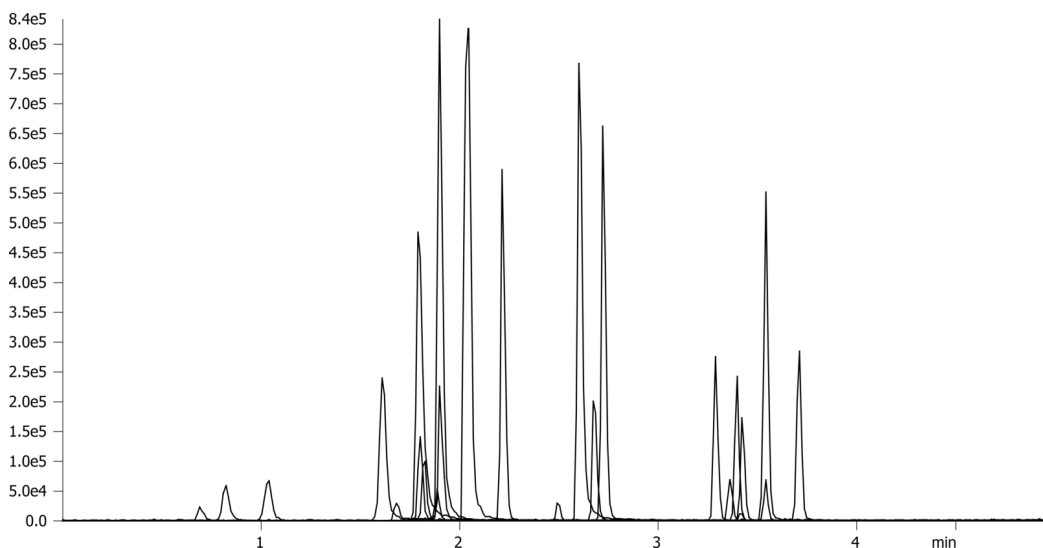
<b>Gradient Profile:</b>	<b>Step No.</b>	<b>Time (min)</b>	<b>Pct A</b>	<b>Pct B</b>
	<b>1</b>	0	95	5
	<b>2</b>	4	5	95
	<b>3</b>	5	5	95
	<b>4</b>	5.1	95	5

**Flow Rate:** 0.4 mL/min

**Col. Temp.:** 40 °C

**Detection:** Tandem Mass Spec (MS-MS) @ 254 nm (ambient)

**Detector Info:** API 4000



Products used in this application:



## Drugs of Abuse by LCMS using Luna Omega 1.6u C18 50x2.1mm

### ANALYTES:

- 1 Morphine
- 2 Oxymorphone
- 3 Hydromorphone
- 4 Amphetamine
- 5 Codeine
- 6 Methamphetamine
- 7 MDA
- 8 Oxycodone
- 9 6-MAM
- 10 MDMA
- 11 Hydrocodone
- 12 MDEA
- 13 BZE
- 14 Norbuprenorphine
- 15 PCP
- 16 Midazolam
- 17 Flurazepam
- 18 Buprenorphine
- 19 Methadone
- 20 Oxazepam
- 21 Lorazepam
- 22 Alprazolam
- 23 Clonazepam
- 24 Temazepam
- 25 Diazepam

