

HPLC Application

ID No.: 23445

Drugs of Abuse by LCMS using Kinetex 1.7 μ Biphenyl 50x2.1mm

Column: Kinetex[®] 1.7 μ m Biphenyl 100 Å LC Column 50 x 2.1 mm, Ea

Dimensions: 50 x 2.1 mm ID

Order No: 00B-4628-AN

Elution Type: Gradient

Eluent A: 0.1 Formic Acid in Water

Eluent B: 0.1 Formic Acid in Acetonitrile

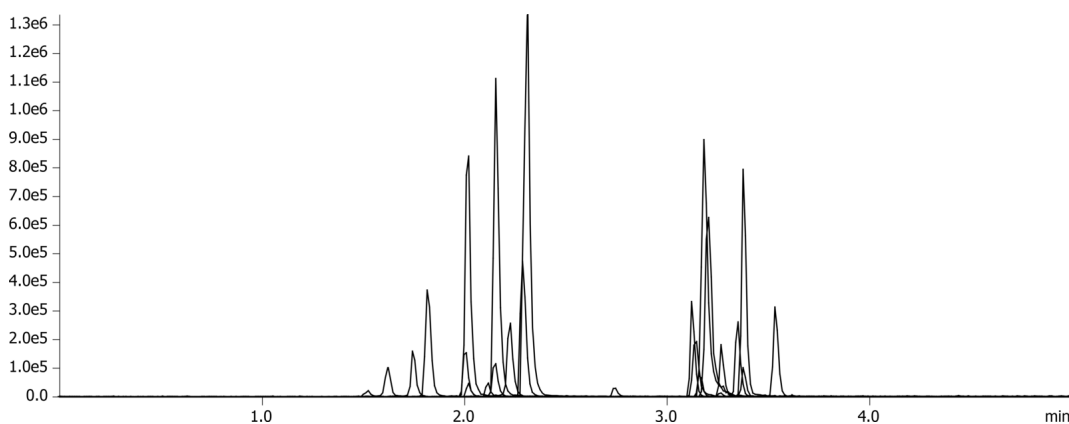
Gradient Profile:	Step No.	Time (min)	Pct A	Pct B
	1	0	95	5
	2	4	5	95
	3	5	5	95
	4	5.1	95	5

Flow Rate: 0.4 mL/min

Col. Temp.: 40 °C

Detection: Tandem Mass Spec (MS-MS) @ 254 nm (ambient)

Detector Info: API 4000



Products used in this application:



Drugs of Abuse by LCMS using Kinetex 1.7u Biphenyl 50x2.1mm

ANALYTES:

- 1 Morphine
- 2 Oxymorphone
- 3 Hydromorphone
- 4 Amphetamine
- 5 MDA
- 6 Codeine
- 7 Methamphetamine
- 8 6-MAM
- 9 Oxycodone
- 10 MDMA
- 11 Hydrocodone
- 12 BZE
- 13 MDEA
- 14 Norbuprenorphine
- 15 Oxazepam
- 16 Midazolam
- 17 Lorazepam
- 18 PCP
- 19 Flurazepam
- 20 Buprenorphine
- 21 Clonazepam
- 22 Alprazolam
- 23 Temazepam
- 24 Diazepam
- 25 Methadone

