

ASMS 2016 Poster Figure 12_ Matrix of Water vs Whole Blood - Pyridoxal 5-phosphate (PLP)

Column: Gemini® 5 µm C18 110 Å, LC Column 50 x 4.6 mm, Ea

Dimensions: 50 x 4.6 mm ID

Order No: 00B-4435-E0

Elution Type: Gradient

Eluent A: 10 mM NH₄HCO₃ pH 8.8

Eluent B: MeOH

Gradient Profile:	Step No.	Time (min)	Pct A	Pct B
	1	0.01	100	0
	2	1.5	100	0
	3	1.8	40	60
	4	5	40	60
	5	5.5	100	0
	6	8	100	0

Flow Rate: 500 µL/min

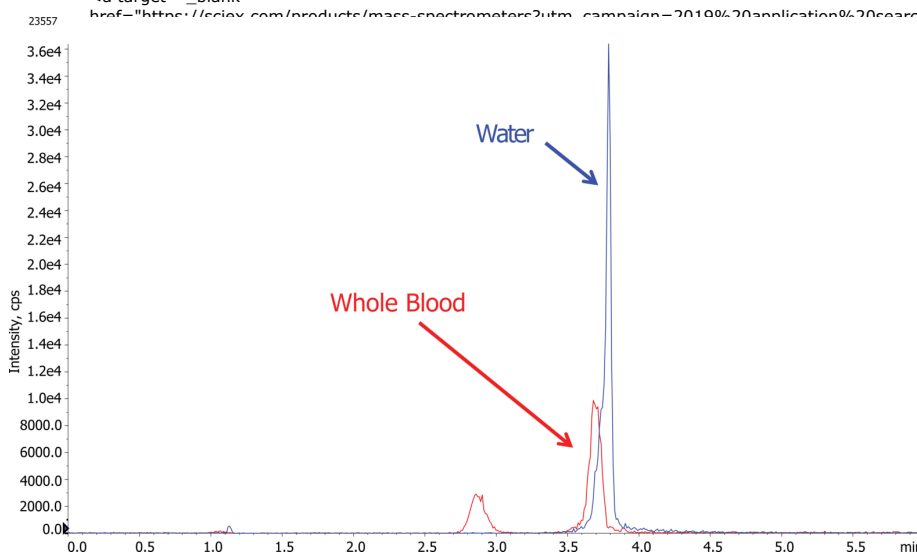
Col. Temp.: ambient

Detection: Tandem Mass Spec (MS-MS) @ (600 °C)

Detector Info:

<a target="_blank"

href="https://sciex.com/products/mass-spectrometers?utm_campaign=2019%20application%20search&utm_source=phenomenex&utm_medium=referral">SCIEX<



ANALYTES:

- 1 Pyridoxal 5-phosphate (PLP)

Retention Time: 3.7 min



Products used in this application:

