

Pyrethroids Extracted from Marine Sediment using QuEChERS by LCMSMS

Column: Kinetex® 2.6µm EVO C18 100 Å, LC Column 50 x 2.1 mm, Ea

Dimensions: 50 x 2.1 mm ID

Order No: 00B-4725-AN

Elution Type: Gradient

Eluent A: 5mM ammonium acetate

Eluent B: methanol

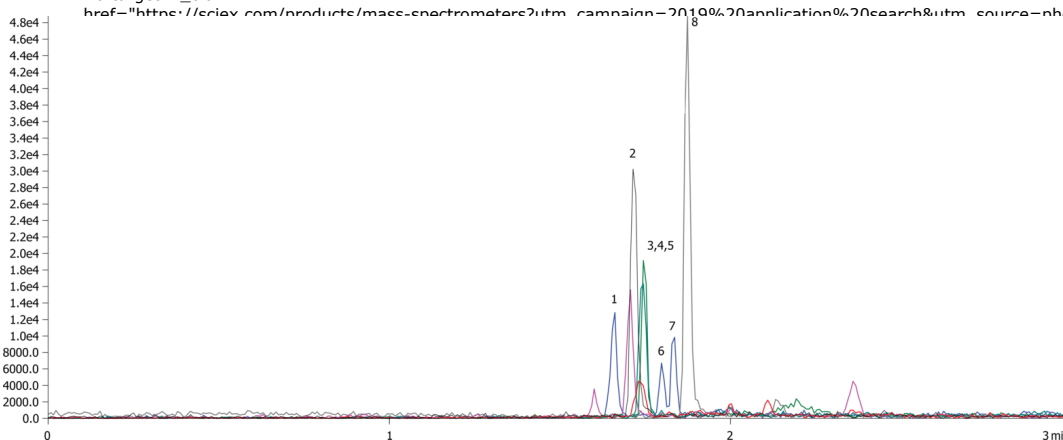
Gradient Profile:	Step No.	Time (min)	Pct A	Pct B
	1	0	50	50
	2	1	5	95
	3	3	5	95
	4	3.01	50	50
	5	6	50	50

Flow Rate: 700 µL/min

Col. Temp.: ambient

Detection: Tandem Mass Spec (MS-MS) @ (ambient)

Detector Info: SCIEX



ANALYTES:

- 1 Cyfluthrin
- 2 Cyhalothrin
- 3 Cypermethrin
- 4 Deltamethrin
- 5 Esfenvalerate
- 6 cis-Permethrin
- 7 trans-Permethrin
- 8 Bifenthrin



Products used in this application:

