

HPLC Application

ID No.: 23560

7.5 min Pain Panel on Kinetex 2.6µm Biphenyl, 30x2.1mm ESI+

Column: Kinetex® 2.6 µm Biphenyl 100 Å LC Column 30 x 2.1 mm, Ea

Dimensions: 30 x 2.1 mm ID

Order No: 00A-4622-AN

Elution Type: Gradient

Eluent A: 10mM Ammonium Formate in Water (pH unadjusted)

Eluent B: 0.1% Formic Acid in Methanol

Gradient Profile:	Step No.	Time (min)	Pct A	Pct B
	1	0	95	5
	2	1.2	70	30
	3	1.3	45	55
	4	2.3	30	70
	5	2.4	5	95
	6	2.7	5	95
	7	2.72	95	5
	8	4	95	5

Flow Rate: 1 mL/min

Col. Temp.: 30 °C

Detection: Tandem Mass Spec (MS-MS) @ (ambient)

Detector Info:

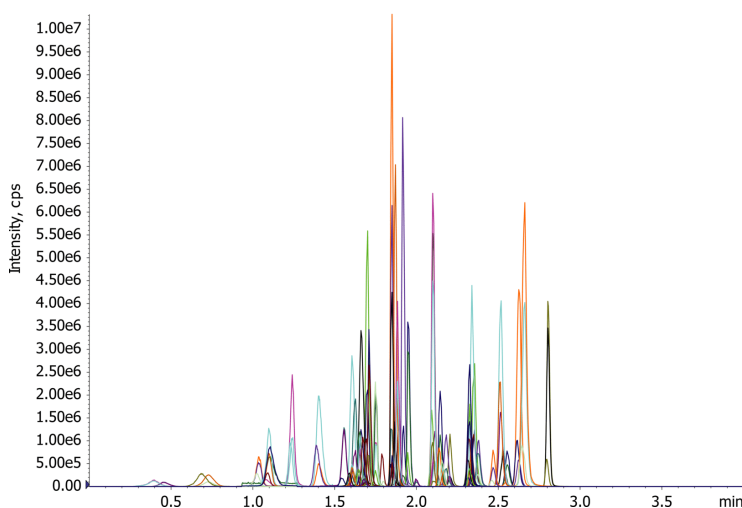
<a target="_blank"

href="http://sciex.com/products/mass-spectrometers?utm_campaign=2019%20application%20search&utm_source=phenomenex&utm_medium=referral">SCIEX<

App ID 23560



Products used in this application:



7.5 min Pain Panel on Kinetex 2.6µm Biphenyl, 30x2.1mm ESI+

ANALYTES:

1 6-MAM	41 PCP
2 7-Aminoclonazepam	42 Pregabalin
3 alpha-hydroxyalprazolam	43 Sertraline
4 Alprazolam	44 Tapentadol
5 Amitriptyline	45 Temazepam
6 Amphetamine	46 Tramadol
7 Benzoylcegonine	47 Zolpidem
8 Buprenorphine	48 Zolpidem-4-carboxylic Acid
9 Carisoprodol	
10 Citalopram	
11 Codeine	
12 Cotinine	
13 Diazepam	
14 EDDP	
15 Fentanyl	
16 Fluoxetine	
17 Gabapentin	
18 Hydrocodone	
19 Hydromorphone	
20 Imipramine	
21 Lorazepam	
22 MDMA	
23 Meperidine	
24 Meprobamate	
25 Methadone	
26 Methamphetamine	
27 Methylphenidate	
28 Morphine	
29 Naloxone	
30 Norbuprenorphine	
31 Nordiazepam	
32 Norfentanyl	
33 Norhydrocodone	
34 Noroxycodone	
35 Normorphine	
36 Nortriptyline	
37 O-Desmethyltramadol	
38 Oxycodone	
39 Oxymorphone	
40 Paroxetine	

