

HPLC Application

ID No.: 23568

EPA 544 on Luna Omega 1.6u Polar C18 100x2.1mm via LC/MS

Column: Luna Omega 1.6 um Polar C18 100 A LC Column 100 x 2.1 mm, Ea

Dimensions: 100 x 2.1 mm ID

Order No: 00D-4748-AN

Elution Type: Gradient

Eluent A: Water

Eluent B: Methanol

Eluent C: 1mM Ammonium Floride

Gradient Profile:	Step No.	Time (min)	Pct A	Pct B	Pct C
	1	0	80	10	10
	2	5	20	70	10
	3	13	20	70	10
	4	13.01	80	10	10
	5	18	80	10	10

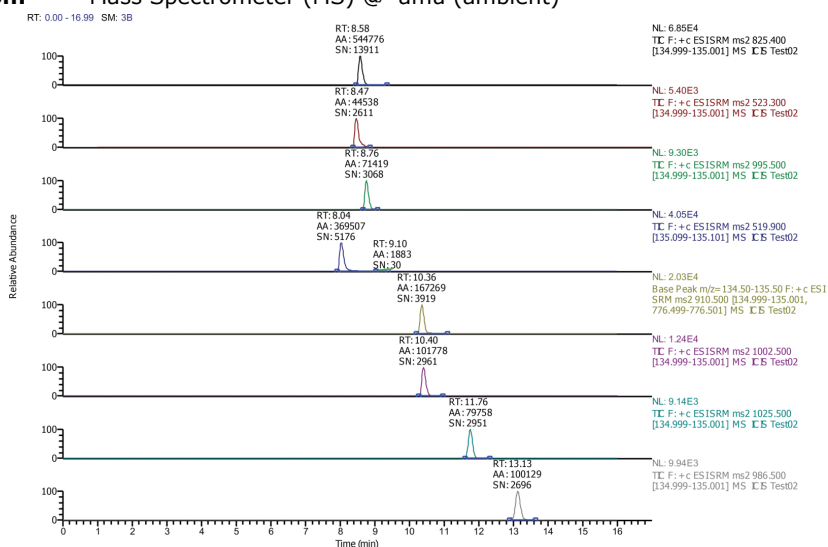
Flow Rate: 0.2 mL/min

Col. Temp.: 40 °C

Detection: Mass Spectrometer (MS) @ amu (ambient)



Products used in this application:



ANALYTES:

- 1 Nodularin
- 2 MC-YR
- 3 MC-LR
- 4 MC-RR
- 5 MC-LA
- 6 MC-LY
- 7 MC-LW
- 8 MC-LF

