

HPLC Application

ID No.: 23570

Batch-to-batch for Luna Omega Polar C18 50x2.1mm

Column: Luna Omega 1.6 um Polar C18 100 A LC Column 50 x 2.1 mm, Ea

Dimensions: 50 x 2.1 mm ID

Order No: 00B-4748-AN

Elution Type: Gradient

Eluent A: Water with 0.1% formic acid

Eluent B: Acetonitrile with 0.1% formic acid

Gradient Profile:	Step No.	Time (min)	Pct A	Pct B
	1	0	95	5
	2	5	5	95

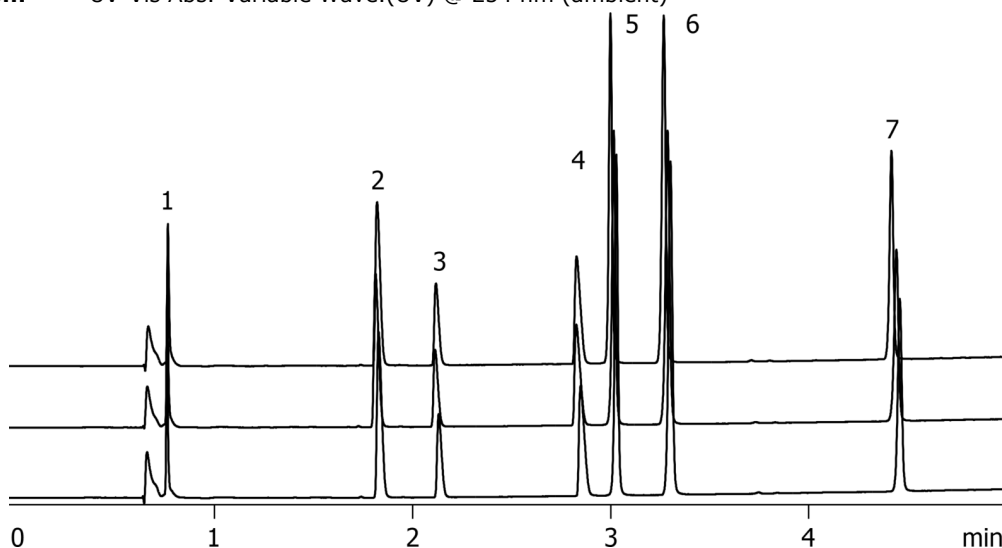
Flow Rate: 400 µL/min

Col. Temp.: 30 °C

Detection: UV-Vis Abs.-Variable Wave.(UV) @ 254 nm (ambient)



Products used in this application:



ANALYTES:

- 1 Uracil
- 2 Pindolol
- 3 Chlorpheniramine
- 4 Nortriptyline
- 5 3-methyl-4-nitrobenzoic acid
- 6 5-Methyl salicylaldehyde
- 7 Hexanophenone

