

HPLC Application

ID No.: 23571

Mycotoxin positive mode using Luna Omega Polar C18 50x2.1mm

Column: Luna Omega 1.6 um Polar C18 100 A LC Column 50 x 2.1 mm, Ea

Dimensions: 50 x 2.1 mm ID

Order No: 00B-4748-AN

Elution Type: Gradient

Eluent A: Water with 0.1% formic acid

Eluent B: Acetonitrile with 0.1% formic acid

Gradient Profile:	Step No.	Time (min)	Pct A	Pct B
	1	0	80	20
	2	4	10	90
	3	4.1	80	20
	4	6	80	20

Flow Rate: 400 µL/min

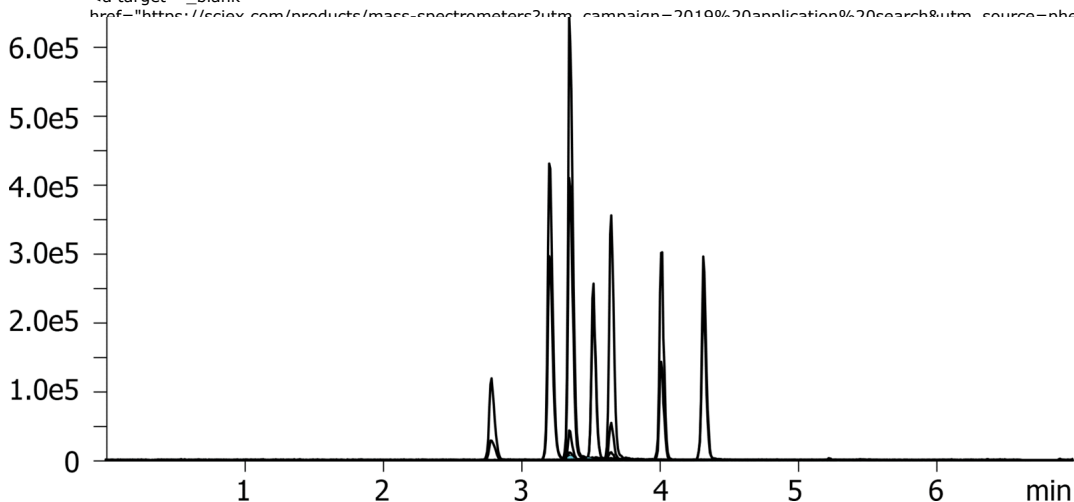
Col. Temp.: 40 °C

Detection: Tandem Mass Spec (MS-MS) @ (450 °C)

Detector Info: SCIEX



Products used in this application:



ANALYTES:

- 1 15DNV
Retention Time: 2.79 min
- 2 Aflatoxin G2
Retention Time: 3.21 min
- 3 Aflatoxin G1
Retention Time: 3.36 min
- 4 Aflatoxin B2
Retention Time: 3.53 min
- 5 Aflatoxin B1
Retention Time: 3.66 min
- 6 Aflatoxin M1
Retention Time: 3.36 min
- 7 HT2 Toxin
Retention Time: 4.02 min
- 8 T2 Toxin
Retention Time: 4.33 min

