

# HPLC Application

ID No.: 23578

## Vitamin enriched water using Luna Omega Polar C18 50x2.1mm

**Column:** Luna Omega 1.6 um Polar C18 100 A LC Column 50 x 2.1 mm, Ea

**Dimensions:** 50 x 2.1 mm ID

**Order No:** 00B-4748-AN

**Elution Type:** Gradient

**Eluent A:** 10mM Ammonium formate + 0.1% formic acid

**Eluent B:** Acetonitrile with 0.1% formic acid

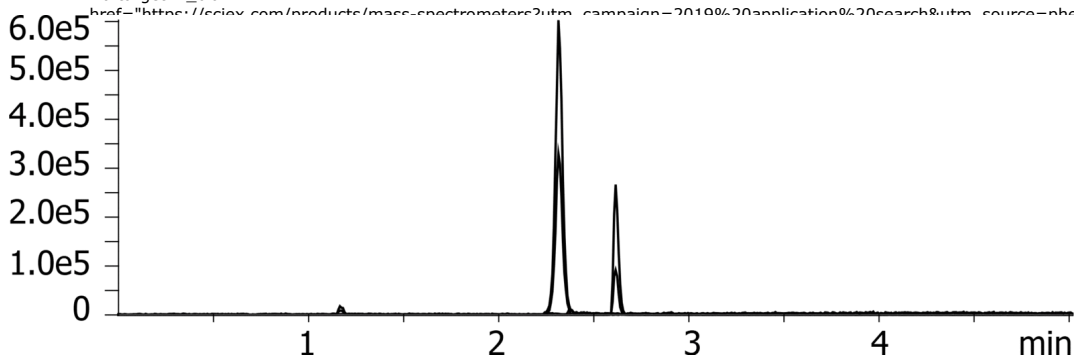
Gradient Profile:	Step No.	Time (min)	Pct A	Pct B
	1	0	100	0
	2	4	10	90
	3	4.1	100	0
	4	7	100	0

**Flow Rate:** 400 µL/min

**Col. Temp.:** 40 °C

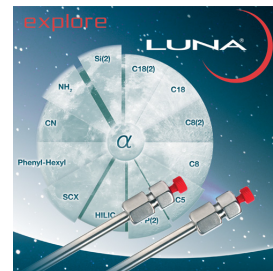
**Detection:** Tandem Mass Spec (MS-MS) @ (450 °C)

**Detector Info:** <a target="\_blank" href="https://sciex.com/products/mass-spectrometers?utm\_campaign=2019%20application%20search&utm\_source=phenomenex&utm\_medium=referral">SCIEX<



### ANALYTES:

- 1  
Retention Time: 0.9 min
- 2 Thiamine  
Retention Time: 1.18 min
- 3 Nicotinic acid  
Retention Time: 1.43 min
- 4 Pyridoxine  
Retention Time: 2.31 min
- 5 Pantothenic acid  
Retention Time: 2.61 min



Products used in this application:

