

HPLC Application

ID No.: 23584

Water-soluble vitamin standards using Luna Omega Polar C18 50x2.1mm

Column: Luna Omega 1.6 um Polar C18 100 A LC Column 50 x 2.1 mm, Ea

Dimensions: 50 x 2.1 mm ID

Order No: 00B-4748-AN

Elution Type: Gradient

Eluent A: 10mM Ammonium formate + 0.1% formic acid

Eluent B: Acetonitrile with 0.1% formic acid

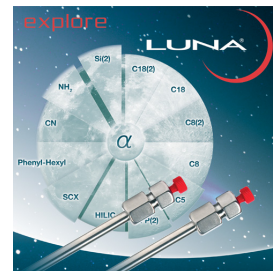
Gradient Profile:	Step No.	Time (min)	Pct A	Pct B
	1	0	100	0
	2	4	10	90
	3	4.1	100	0
	4	7	100	0

Flow Rate: 400 µL/min

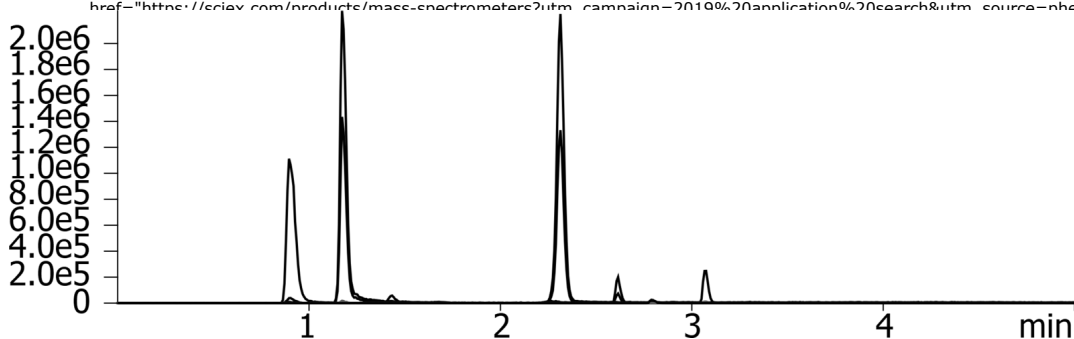
Col. Temp.: 40 °C

Detection: Tandem Mass Spec (MS-MS) @ (450 °C)

Detector Info: SCIEX



Products used in this application:



ANALYTES:

- 1 Pyridoxamine
Retention Time: 0.9 min
- 2 Thiamine
Retention Time: 1.18 min
- 3 Nicotinic acid
Retention Time: 1.43 min
- 4 Pyridoxine
Retention Time: 2.31 min
- 5 Pantothenic acid
Retention Time: 2.61 min
- 6 Folic acid
Retention Time: 2.79 min
- 7 Riboflavin
Retention Time: 3.07 min

